



POST GRADUATE DEPARTMENT OF MATHEMATICS

VIJAYA COLLEGE

1.	Name of the department	PG MATHEMATICS
2.	Year of Establishment	2011
3.	Names of Programmes / Courses offered (UG, PG, M.Phil., Ph.D., Integrated Masters; Integrated Ph.D., etc.)	M.Sc. in Mathematics
4.	Names of Interdisciplinary courses and the departments/units involved	NIL
5.	Annual/ semester/choice based credit system (programme wise)	Semester System : Prior to 2014 - 15 Choice Based Credit system: 2014 - 15 onwards
6.	Participation of the department in the courses offered by other departments	NIL
7.	Courses in collaboration with other universities, industries, foreign institutions, etc.	NIL
8.	Details of courses/programmes discontinued (if any) with reasons	NIL
9.	Number of teaching posts	
	Designation	Sanctioned
	Filled	
	Professors	NIL
Associate Professors	NIL	
Asst. Professors	4	



10. Faculty profile with name, qualification, designation, specialization, (D.Sc./D.Litt. /Ph.D. / M. Phil. etc.,)

Name	Qualification	Designation	Specialization	No. of Years of Experience
Dr. K. Sushan Bairy	M.Sc., M.Phil., Ph.D	Assistant Professor & Coordinator	Number Theory (Works of Srinivasa Ramanujan)	5 Years
Dr. Veena L. Pujari	M.Sc., M.Phil., Ph.D	Assistant Professor	Nevanlinna Theory	5 Years
Smt. Chaitra V.	M.Sc., M.Phil.,	Assistant Professor	Graph Theory	9.5 Years
	Pursuing Ph.D in Bangalore University under the guidance of Dr. B. Chaluvvaraju , Department of Mathematics.		Title: "Some studies in theory of graphs and combinatorics"	

11.	List of senior visiting faculty					
	Dr. K. R. Srikantaiah	Retd. Professor of Mathematics, Bangalore University				
	Dr. B. R. Srinivas	Retd. Principal and Professor of Mathematics, Kongadiyappa College, Doddaballapur				
12.	Percentage of lectures delivered and practical classes handled (programme wise) by temporary faculty	NIL				
13.	Student -Teacher Ratio (programme wise)	22 : 1				
14.	Number of academic support staff	<table border="1" style="width: 100%;"> <tr> <td style="text-align: center;">Sanctioned</td> <td style="text-align: center;">Filled</td> </tr> <tr> <td style="text-align: center;">1</td> <td style="text-align: center;">1</td> </tr> </table>	Sanctioned	Filled	1	1
Sanctioned	Filled					
1	1					
15.	Qualifications of teaching faculty with D Sc/ D.Litt. / Ph.D. / MPhil / PG	<table border="1" style="width: 100%;"> <tr> <td style="text-align: center;">Ph.D</td> <td style="text-align: center;">02</td> </tr> <tr> <td style="text-align: center;">M.Phil.</td> <td style="text-align: center;">01</td> </tr> </table>	Ph.D	02	M.Phil.	01
Ph.D	02					
M.Phil.	01					
16.	Number of faculty with ongoing projects from	NIL				



	National Funding Agency	NIL
	International Funding Agency	NIL
17.	Departmental projects funded by DST - FIST; UGC, DBT, ICSSR, etc. and total grants received.	NIL
18.	Research Centre /facility recognized by the University	NIL
19.	Publications	
	Publication per faculty	11.67
	Number of papers published in peer reviewed journals	35
	National Journals	16
	International Journals	19
	Books Edited	NIL
	Books Edited with ISBN Numbers	01
	K. Sushan Bairy : <i>Contributions to modular equations and class invariants,</i> Ph.D. Thesis, Bangalore University, 2011; <i>Lambert Academic Publishing, Germany, 2013.</i> (ISBN: 978-3-659-23898-7).	
	Impact factor	0.554
	h - index	5



Details of Paper Publications

i. International Journal Publications

Sl. No.	Name of the Faculty	Title of the paper Published	Name of the Journal along with Volume number etc.,	Citation	Impact Factor
1	K. Sushan Bairy	Modular equations for the ratios of Ramanujan's theta function ψ and evaluations. (With M. S. Mahadeva Naika and S. Chandankumar)	New Zealand J. Math., 40, (2010), 33-48.	10	--
2	K. Sushan Bairy	Some new modular equations of degree four and their explicit evaluations. (With M. S. Mahadeva Naika and M. Manjunatha)	Eur. J. Pure Appl. Math., 3(6), (2010), 924-947.	12	2.12
3	K. Sushan Bairy	On some new Schläfli-type mixed modular equations. (With M. S. Mahadeva Naika)	Advanced Studies of Contemporary Mathematics 21(2), (2011), 189-206.	0	--
4	K. Sushan Bairy	New identities for Ramanujan's cubic continued fraction. (With M. S. Mahadeva Naika and S. Chandankumar)	Funct. Approx. Comment. Math., 46(1), (2012), 29-44.	15	--
5	K. Sushan Bairy	On some new identities for Ramanujan's cubic continued fraction. (With M. S. Mahadeva Naika and S. Chandankumar)	Intl. J. Contemp. Math. Sci., 7(20), (2012), 953-962.	4	0.165

VIJAYA COLLEGE



Sl. No.	Name of the Faculty	Title of the paper Published	Name of the Journal along with Volume number etc.,	Citation	Impact Factor
6	K. Sushan Bairy	Some modular equations in the form of Schläfli. (With M. S. Mahadeva Naika).	Italian J. Pure Appl. Math., 30, (2013), 233-252	0	--
7	K. Sushan Bairy	Certain identities for a continued fraction of Ramanujan, (With M. S. Mahadeva Naika and S. Chandankumar)	Adv. Studies Contemp. Math., 24(1), (2014), 45-66.	0	--
8	K. Sushan Bairy	A recurrence relation related to the product and successors of a known four-variable elementary identity (with S. Bhargava)	Proceedings Jangjeon Math. Soc., 17(2) (2014), pp. 273-286	0	--
9	K. Sushan Bairy	Certain modular relations for remarkable product of theta-functions (with M.S. Mahadeva Naika and N. P. Suman)	Proceedings Jangjeon Math. Soc., 17 (3) (2014), pp. 317-331	0	--
10	Veena L.Pujari	E-valued Borel Exceptional values of Meromorphic functions. (With Subhas S. Bhoosnurmath)	Int. J. Math. Anal., 4 (42) (2010), 2089-2099	5	--
11	Veena L.Pujari	On a Result of Wittich and Milloux in Banach Spaces. (With Subhas S. Bhoosnurmath)	Journal of Indian Academy of Mathematics, Vol.33, No.1 (2011), 113-128.	0	--



Sl. No.	Name of the Faculty	Title of the paper Published	Name of the Journal along with Volume number etc.,	Citation	Impact Factor
12	Veena L.Pujari	Uniqueness of Meromorphic Functions Concerning Differential Polynomials (With Subhas S.Bhoosnurmath and Anupama J.Patil)	Tamkang Journal of Mathematics, Vol.43, No.1, 51-68 (2012).	0	--
13	Veena L.Pujari	Uniqueness of Meromorphic Functions Sharing Fixed Point (With Subhas S.Bhoosnurmath)	International Journal of Analysis, Volume 2013, Article ID 538027, 12 pages.	0	--
14	Veena L.Pujari	On the Meromorphic Solutions of certain Non-linear Difference Equations	International Journal of Analysis and Applications, Volume 6, Number 1(2014), pp. 44-52.	0	--
15	Veena L.Pujari	Weighted sharing and Uniqueness of Entire or Meromorphic Functions (with Subhas S.Bhoosnurmath)	Bulletin of Korean Mathematical Society, 52(2015), No. pp.13-33	0	0.148
16	Chaitra V	Roman Domination in Odd and Even Distanced Graphs, (with B. Chaluvvaraju)	South East Asian J. Math. Math. Sci., 10(1) (2011), 69-76	0	--
17	Chaitra.V.	Roman Domination in Complementary Prism Graphs(with B.Chaluvvaraju)	International J. Math. Combin. Vol.2 (2012), 24-31	0	--



Sl. No.	Name of the Faculty	Title of the paper Published	Name of the Journal along with Volume number etc.,	Citation	Impact Factor
18	Chaitra.V.	Fair Domination in line graphs and its complement, (with B. Chaluvvaraju)	International J. Math. Sci. \&Engg. Appls(IJMSEA) Vol.7 No IV(July 2013) (ISSN 0973-9424)pp 439-446	0	0.3025
19	Chaitra.V.	Special kind of colorable complements,(with B. Chaluvvaraju and C. Nandeesh Kumar)	International J. Math. Combin. (ISSN 1937 1055)Vol.3(2013) pp 35-43	0	--

ii. Publications in National Journals

Sl. No.	Name of the Faculty	Title of the paper Published	Name of the Journal along with Volume number etc.,	Citation	Impact Factor
1	K. Sushan Bairy	On some parameter involving Ramanujan's cubic continued fraction. (With M. S. Mahadeva Naika and S. Chandankumar)	Indian Journal of Mathematics 53(3), (2011), 495-509.	2	--
2	K. Sushan Bairy	A continued fraction of order 4 found in Ramanujan's 'lost' notebook. (With M. S. Mahadeva Naika and M. Manjunatha)	South East Asian J. Math. Math. Sci., 9(3), (2011), 43-63.	3	--
3	K. Sushan Bairy	Certain identities for a continued fraction of Eisenstein. (With M. S. Mahadeva Naika and M. Manjunatha)	Far East J. Math. Sci., 57 (2), (2011), 205-226.	4	0.692



Sl. No.	Name of the Faculty	Title of the paper Published	Name of the Journal along with Volume number etc.,	Citation	Impact Factor
4	K. Sushan Bairy	Some new identities for a continued fraction of order 12. (With M. S. Mahadeva Naika and S. Chandankumar)	South East Asian J. Math. Math. Sci., 10 (2), (2012), 129-140.	0	--
5	K. Sushan Bairy	Class invariants and its applications. (With M. S. Mahadeva Naika).	Proceedings of the National Conference on Geometry, Algebra, Logic and Number Theory, Applications, Tumkur University, December 2012, 72-99. (ISBN: 978-81-924393-4-1).	0	--
6	K. Sushan Bairy	On some explicit evaluations for the ratios of Ramanujan's theta-function (With M.S. Mahadeva Naika and S. Chandankumar)	Bull. Allahabad Math. Soc., 29 (1) (2014), pp. 53-86	4	--
7	Veena L.Pujari	E-valued Borel Exceptional values of Meromorphic functions. (With Subhas S. Bhoosnurmath)	Int. J. Math. Anal., 4 (42) (2010), 2089-2099	5	--
8	Veena L.Pujari	On a Result of Wittich and Milloux in Banach Spaces. (With Subhas S. Bhoosnurmath)	Journal of Indian Academy of Mathematics, Vol.33, No.1 (2011), 113-128.	0	--
9	Veena L.Pujari	Uniqueness of Meromorphic Functions Concerning Differential Polynomials (With Subhas S. Bhoosnurmath and Anupama J. Patil)	Tamkang Journal of Mathematics, Vol.43, No.1, 51-68 (2012).	0	--



Sl. No.	Name of the Faculty	Title of the paper Published	Name of the Journal along with Volume number etc.,	Citation	Impact Factor
10	Veena L.Pujari	Uniqueness of Meromorphic Functions Sharing Fixed Point (With Subhas S.Bhoosnurmath)	International Journal of Analysis, Volume 2013, Article ID 538027, 12 pages.	0	--
11	Veena L.Pujari	On the Meromorphic Solutions of certain Non-linear Difference Equations	International Journal of Analysis and Applications, Volume 6, Number 1(2014), pp. 44-52.	0	--
12	Veena L.Pujari	Weighted sharing and Uniqueness of Entire or Meromorphic Functions (with Subhas S.Bhoosnurmath)	Bulletin of Korean Mathematical Society, 52(2015), No. pp.13-33	0	0.148
13	Chaitra V	Roman Domination in Odd and Even Distanced Graphs, (with B. Chaluvvaraju)	South East Asian J. Math. Math. Sci., 10(1) (2011), 69-76	0	--
14	Chaitra.V.	Roman Domination in Complementary Prism Graphs(with B.Chaluvvaraju)	International J. Math. Combin. Vol.2 (2012), 24-31	0	--
15	Chaitra.V.	Fair Domination in line graphs and its complement, (with B. Chaluvvaraju)	International J. Math. Sci. \&Engg. Appls(IJMSEA) Vol.7 No IV(July 2013) (ISSN 0973-9424)pp 439-446	0	0.3025
16	Chaitra.V.	Special kind of colorable complements,(with B. Chaluvvaraju and C. Nandeesh Kumar)	International J. Math. Combin. (ISSN 1937 1055)Vol.3(2013) pp 35-43	0	--

20.	Areas of consultancy and income generated	NIL
-----	---	-----



21.	Faculty as members in	
	a. National Committees	NIL
	b. International Committees	NIL
	c. Editorial Boards	02
	<p>DR. K SUSHAN BAIRY Reviewer for Mathematical Reviews, American Mathematical Society</p>	
	<p>SMT. CHAITRA V. Referee, Journal of Combinatorial Optimization</p>	
	<p>MEMBERSHIP IN ACADEMIC BODIES</p>	
	<p>Dr. K. Sushan Bairy</p> <ul style="list-style-type: none"> (i) Life Member, Society for Special Functions and their Applications (ii) Life Member, Indian Mathematical Society (Membership Number: B-07-083) (iii) Life Member, Ramanujan Mathematical Society (Registration No. 526) (iv) Life Member, Indian Society of Mathematics and Mathematical Sciences (ISMAMS) (Membership No. 194) (v) Member, Research Group in Mathematical Inequalities and its Applications (RGMIA) (vi) Life Member, The Indian Science Congress Association (Membership Number: L16434) 	
22.	Student projects	
	a) Percentage of students who have done in-house projects including inter departmental/programme	NIL
	b) Percentage of students placed for projects in organizations outside the institution i.e.in Research laboratories/Industry/ other agencies	NIL



23.	Awards / Recognitions received by faculty and students	
	<p>Dr. K. Sushan Bairy Award Received : Best Research Article presented Event : International Conference on Emerging Trends in Mathematical Sciences Date : July 25-26, 2014, Organized By : Vijayanagara Sri Krishnadevaraya University, Bellary. Title of the Research Paper Awarded : “New identities for Ramanujan’s cubic continued fraction”.</p>	
24.	List of eminent academicians and scientists / visitors to the department	
a.	Dr. B. Chalugaraju	Assistant Professor, Department of Mathematics, Bangalore University, Bangalore
b.	Mr. Nagosa Rangreji	Business Analyst, Tibil Solutions, Indranagar, Bangalore
c.	Dr. R. VittalRao	Professor of Mathematics, Indian institute of Science, Bangalore
d.	Mr. Phaneendar B. N	Director – Forensic Department, Clue4 Evidence Forensic Inv. Pvt. Ltd
e.	Prof. Kaushal Kumar Verma	Associate Professor, Department of Mathematics, Indian Institute of Science, Bangalore
25.	Seminars/ Conferences/Workshops organized & the source of funding	NIL

Conferences Attended

i. International Conferences

Sl. No.	Name of the Faculty	Title of the Work shop/ Seminar/ Conference and Date	Organized by (Name of the Institution or University)	Title of the paper presented
1	K. Sushan Bairy	International Conference on Emerging trends in Mathematical Sciences, July 25-26, 2014	Department of Studies in Mathematics, Vijayanagara Sri-Krishnadevaraya University, Bellary	New identities for Ramanujan's cubic continued fraction



Sl. No.	Name of the Faculty	Title of the Work shop/ Seminar/ Conference and Date	Organized by (Name of the Institution or University)	Title of the paper presented
2	K. Sushan Bairy	26th International Conference of Jangjeon Mathematical Society, August 01-04, 2013	Acharya Institute of Graduate Studies, Bangalore	Some new modular equations of degree four and their explicit evaluations
3	K. Sushan Bairy	International Conference on the Works of Srinivasa Ramanujan and Related Topics, Dec. 12-14, 2012	University of Mysore, Mysore	Certain quotient of eta-function identities
4	Veena L.Pujari	One day International Symposium on Advances in Applied Mathematics, Jan. 18, 2014	PG Department of Mathematics & Research Centre in Applied Mathematics, MES College of Arts, Commerce & Science, Bengaluru	Participated
5	Veena L.Pujari	26th International Conference of Jangjeon Mathematical Society, August 01-04, 2013	Acharya Institute of Graduate Studies, Bangalore	On the uniqueness problems in the class A of meromorphic functions
6	Veena L.Pujari	International Workshop on "Complex Analysis and Its Applications", June 11-15, 2012	Walchand College of Engineering, Sangli, Maharashtra.	Participated
7	Chaitra V	International Conference on Mathematics - Yesterday and Today, Dec. 26-27, 2014	Department of Mathematics, JSS College of Arts, Commerce & Science, Mysore	Fair domination polynomial of a graph

VIJAYA COLLEGE



Sl. No.	Name of the Faculty	Title of the Work shop/ Seminar/ Conference and Date	Organized by (Name of the Institution or University)	Title of the paper presented
8	Chaitra V	26th International Conference of Jangjeon Mathematical Society, August 01-04, 2013	Acharya Institute of Graduate Studies, Bangalore	Fair domination in line graphs and its complements

VIJAYA COLLEGE

ii. National Conferences Attended

Sl. No.	Name of the Faculty	Title of the Work shop/ Seminar/ Conference	Indicate regional Level /State level/ National/ International level	Organized by (Name of the Institution or University)	Title of the paper presented
1	K. Sushan Bairy	80th Annual Conference of Indian Mathematical Society, Dec. 27-30, 2014	National Level	Department of Applied Mathematics, Indian School of Mines, Dhanbad	Some modular equations in the form of Schlafli
2	K. Sushan Bairy	Emerging trends in Ramanujan's Mathematics and its applications in the field of q-hypergeometric series, Dec. 22-24, 2012	National Level	The National Academy of Sciences, India, Allahabad	
3	K. Sushan Bairy	Mathematics workshop on Scilab and Maxima, Nov. 16-17, 2012	National Level	The Oxford College of Science, Bangalore	
4	K. Sushan Bairy	National Conference on Mathematical Analysis and Applications, June 23-24, 2012	National Level	Adichunchanagiri Institute of Technology, Chickmagalur	A continued fraction of order 4 found in Ramanujan's 'lost' notebook



Sl. No.	Name of the Faculty	Title of the Work shop/ Seminar/ Conference	Indicate regional Level /State level/ National/ International level	Organized by (Name of the Institution or University)	Title of the paper presented
5	K. Sushan Bairy	77 th Annual Conference of Indian Mathematical Society, Dec. 27-30, 2011.	National Level	SRTM University, Nanded	On some parameter involving Ramanujan's cubic continued fraction
6	K. Sushan Bairy	UGC Sponsored National Conference on applications of mathematics and statistics, March 25-26, 2011	National Level	Department of Mathematics and Statistics, Yuvaraja's College, Mysore	
7	K. Sushan Bairy	98 th Indian Science Congress, Jan. 3-7, 2011	National Level	SRM University, Chennai	On some explicit evaluation of the ratio's of Ramanujan's theta function
8	K. Sushan Bairy	76 th Annual Conference of Indian Mathematical Society, Dec. 27-30, 2010.	National Level	Department of applied Mathematics & Humanities, S.V. National Institute of Technology, Surat	Certain identities for a continued fraction of Ramanujan
9	K. Sushan Bairy	Workshop on Ramanujan's Mathematics, Dec. 22-24, 2010	National Level	The National Academy of Sciences, India, Allahabad	
10	K. Sushan Bairy	The National Conference on the works of Srinivasa Ramanujan, July 3, 2010	National Level	Department of Studies in Mathematics, University of Mysore, Mysore	



Sl. No.	Name of the Faculty	Title of the Work shop/ Seminar/ Conference	Indicate regional Level /State level/ National/ International level	Organized by (Name of the Institution or University)	Title of the paper presented
11	K. Sushan Bairy	25th Annual Conference of the Ramanujan Mathematical Society, May 3-5, 2010	National Level	Department of Mathematics, Dr. B.R. Ambedkar National Institute of Technology, Jalandhar	Certain identities for a continued fraction of Eisenstein
12	K. Sushan Bairy	One day Workshop on Accelerating Research Discovery and Innovation, April 26, 2010	National Level	Bangalore University Library, Bangalore	
13	Veena L.Pujari	one day Workshop on "Bhaskaracharya-II & His Works", Feb. 6, 2015	National Level	PG Department of Mathematics & Research Centre in Applied Mathematics, MES College of Arts, Commerce & Science, Bengaluru	
14	Veena L.Pujari	One day workshop on CSIR-UGC NET JRF/LS Mathematics Examination, June 17, 2013	National Level	Department of Mathematics, Bangalore University, Bangalore	
15	Veena L.Pujari	Advanced Training in Mathematics School on "Complex Analysis and Related Topics", March 15-19, 2013	National Level	Dept. of Mathematics, Central University of Rajasthan, Kishangarh. Rajasthan	



Sl. No.	Name of the Faculty	Title of the Work shop/ Seminar/ Conference	Indicate regional Level /State level/ National/ International level	Organized by (Name of the Institution or University)	Title of the paper presented
16	Veena L.Pujari	Two-day National Conference on "Frontiers in Applied Mathematics", March 9-10, 2012	National Level	PG Department of Mathematics & Research Centre in Applied Mathematics, MES College of Arts, Commerce & Science, Bengaluru	Uniqueness of meromorphic functions sharing fixed points
17	Veena L.Pujari	UGC Sponsored National Conference on analysis and applications, March 15-17, 2011	National Level	PG Department of Studies and Research in Mathematics, Karnatak University, Dharwad	
18	Veena L.Pujari	76th Annual Conference of Indian Mathematical Society, Dec. 27-30, 2010.	National Level	Department of applied Mathematics & Humanities, S.V. National Institute of Technology, Surat	Uniqueness of meromorphic functions concerning differential polynomials
19	Veena L.Pujari	The National Conference on the works of Srinivasa Ramanujan, July 3, 2010	National Level	Department of Studies in Mathematics, University of Mysore, Mysore	
20	Veena L.Pujari	UGC Sponsored two day national level conference on Recent advances in analysis and its applications, April 27-28, 2010	National Level	Smt. A.S.M College for Women, Bellary	E-valued Borel exceptional values of meromorphic functions
21	Chaitra V	National Conference on Recent Developments in Mathematics and their Applications, Oct. 17-18, 2014	National Level	Department of Mathematics, University College of Science, Tumkur University, Tumkur	Edge domination polynomial of a graph



Sl. No.	Name of the Faculty	Title of the Work shop/ Seminar/ Conference	Indicate regional Level /State level/ National/ International level	Organized by (Name of the Institution or University)	Title of the paper presented
22	Chaitra V	UGC Sponsored one day national seminar on "Topology & Mathematical Modeling", Oct. 11, 2014	National Level	K.L.E. Society's S. Nijalingappa College, Bangalore	
23	Chaitra V	One day National Conference on Recent Advances in Mathematics, Jan. 24, 2014	National Level	Department of Mathematics, JSS College of Arts, Commerce & Science, Mysore	"Switching invariants of graph"
24	Chaitra V	One day workshop on CSIR-UGC NET JRF/LS Mathematics Examination, June 17, 2013	National Level	Department of Mathematics, Bangalore University, Bangalore	
25	Chaitra V	III National Conference on Emergin Trends in Fluid Mechanics and Graph Theory, Feb. 16-17, 2012	National Level	Department of Mathematics, Christ University, Bangalore	Fair Domination in Derived graphs
26	Chaitra V	UGC CPE sponsored National level workshop on Scilab, Sept. 8-9, 2011	National Level	Department of Mathematics, Government Science College, Bangalore	
27	Chaitra V	School on Graph algorithms, March 26-31, 2011	National Level	Department of Computer Science, Karnatak University, Dharwad	
28	Chaitra V	UGC Sponsored National Conference on Recent trends in Discrete Mathematics, Dec. 9-11, 2010	National Level	Nazareth Margoschis college at Pillaiyanmanai, Nazareth, TN	Roman domination of some special graphs



Sl. No.	Name of the Faculty	Title of the Work shop/ Seminar/ Conference	Indicate regional Level /State level/ National/ International level	Organized by (Name of the Institution or University)	Title of the paper presented
29	Chaitra V	Conference on Discrete Mathematics at Knowledge Utsav, Aug. 28, 2010	National Level	Jain Global Campus, Jain University	Odd and even distance roman domination
30	Chaitra V	National Conference on Emergin Trends in Fluid Mechanics and Graph Theory, Feb. 25-26, 2010	National Level	Department of Mathematics, Christ University, Bangalore	

26. Student profile programme/course wise:

Year	Applications Received in the college	Selected at the college	Filled by University	Enrolled		Total	Pass Percentage
				Male	Female		
2011 - 12	25	10	8	6	12	18	NA
2012 - 13	100	20	20	8	32	40	50%
2013 - 14	50	20	20	14	26	40	95%
2014 - 15	44	11	19	19	11	30	

27. Diversity of Students

Name of the Course	% of students from the same state	% of students from other States	% of students from abroad
M.Sc. (Mathematics)	97%	3%	0%



28. How many students have cleared national and state competitive examinations such as NET, SLET, GATE, Civil services, Defense services, etc.?
1. **Abhishek Bharadwaj**, cleared **UGC-CSIR NET** Dec.2012 Examination, secured 0018/0158 rank in Mathematical sciences under CSIR fellowship scheme.
 2. **Abhishek Bharadwaj**, cleared **GATE** in Mathematics: Score 735 valid from 15 March 2014 to 14 March 2015 with Reg. Number 16351101

29. **Student progression**

Student progression	Against % enrolled
UG to PG	Not applicable
PG to M.Phil.	NIL
PG to Ph.D.	01 out of 16 students of 2011-13 Batch
Ph.D. to Post-Doctoral	NIL
To B.Ed.	25% of 2011-13 Batch and 25% of 2012-14 Batch
Employed	
• Campus selection	NIL
• Other than campus recruitment	25% of 2011-13 and 2012-14 Batch
Entrepreneurship/Self-employment	NIL

30.	Details of Infrastructural facilities	
a.	LIBRARY	
	Books PG Library	502 Books



	<p>Journals</p> <ul style="list-style-type: none"> ➤ The Mathematics Student, ➤ The Journal of Mathematical Society, ➤ The Journal of Ramanujan Mathematical Society 	03
b.	Internet facilities for Staff & Students	
	Available with a computer Laboratory named Ramanujan FOSS Computer Laboratory equipped with 20 computers	
c.	Class rooms with ICT facility	01 Class room
d.	Laboratories	01
31.	Number of students receiving financial assistance from college, university, Government or other agencies	Data furnished under student support services
	<p>In addition to the above,</p> <ul style="list-style-type: none"> ➤ THREE students were awarded Merit Scholarship of Rs.10,000 each by the BHS-HES in 2013 - 14 ➤ THREE students were awarded Merit Scholarship of Rs.15,000 each by the BHS-HES in 2014 - 15 	
32.	Details of Student Enrichment Programmes	05
	Invited Lecture: Dr. B. Chaluvvaraju , Assistant Professor, Department of Mathematics, Bangalore University, Bangalore " The Role of Algebra in Modern Mathematics ", 22 nd October 2011	
	Invited Lecture: Mr. Nagosa Rangreji , Business Analyst, Tibil Solutions, Indranagar, Bangalore " Career Opportunities (an overview) ", 08 th June 2013	
	Invited Lecture: Dr. R. VittalRao , Professor of Mathematics, Indian institute of Science, Bangalore, " Works of Srinivasa Ramanujan " 11 th October 2013	
	Invited Lecture: Mr. Phaneendar B. N. , Director - Forensic Department, Clue4 Evidence Forensic Inv. Pvt. Ltd., " Importance of Signature and Forensics ", 12 th April, 2014	
	Special Lecture: Prof. Kaushal Kumar Verma , Associate Professor, Department of Mathematics, Indian Institute of Science, Bangalore, " Schwarz Lemma and Mapping Problems in Complex Analysis ", 29 th October, 2014	

33. Teaching methods adopted to improve student learning

- Chalk and talk
- ICT teaching



- Study material / notes will be given in the classroom
- Assignment will be given on each paper
- Question paper pattern will be discussed
- Objective type questions will be solved
- Seminars will be conducted after the class hours.

34. Participation in Institutional Social Responsibility (ISR) and Extension activities:

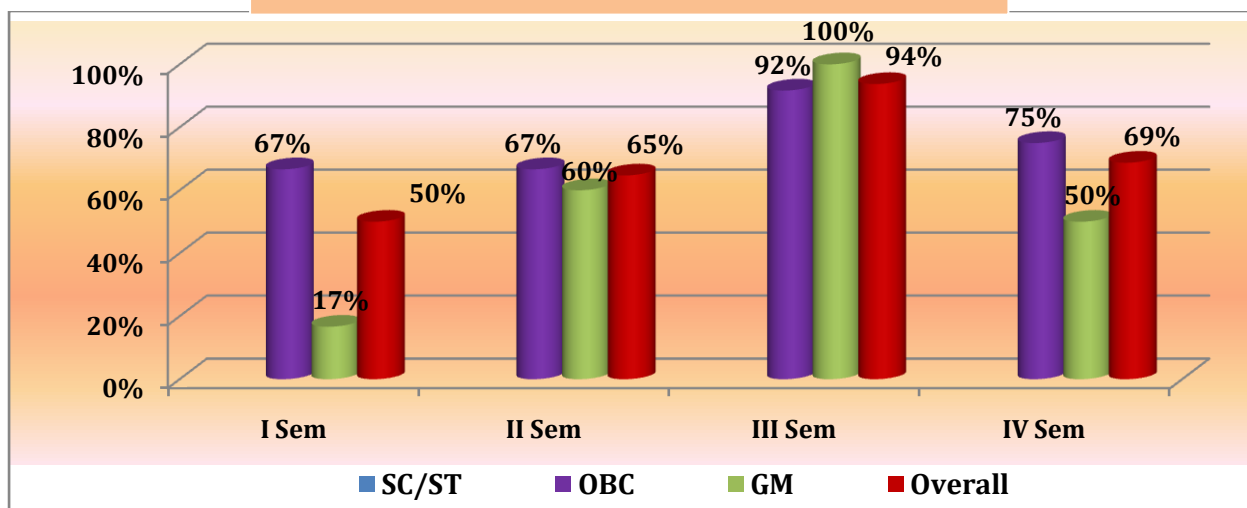
Staff and students participate in different programs organized by College. (viz., NSS, NCC, Independence day, Republic day, sports, Women empowerment, cleanliness etc.)

Result Analysis: Trends of Success Rate and Cohort Performance

Batch - I : 2011 - 2013

Category	I Sem	II Sem	III Sem	IV Sem
SC/ST	NA	NA	NA	NA
OBC	67%	67%	92%	75%
GM	17%	60%	100%	50%
Overall	50%	65%	94%	69%

Performance of Batch - I M.Sc. Maths : 2011 - 13

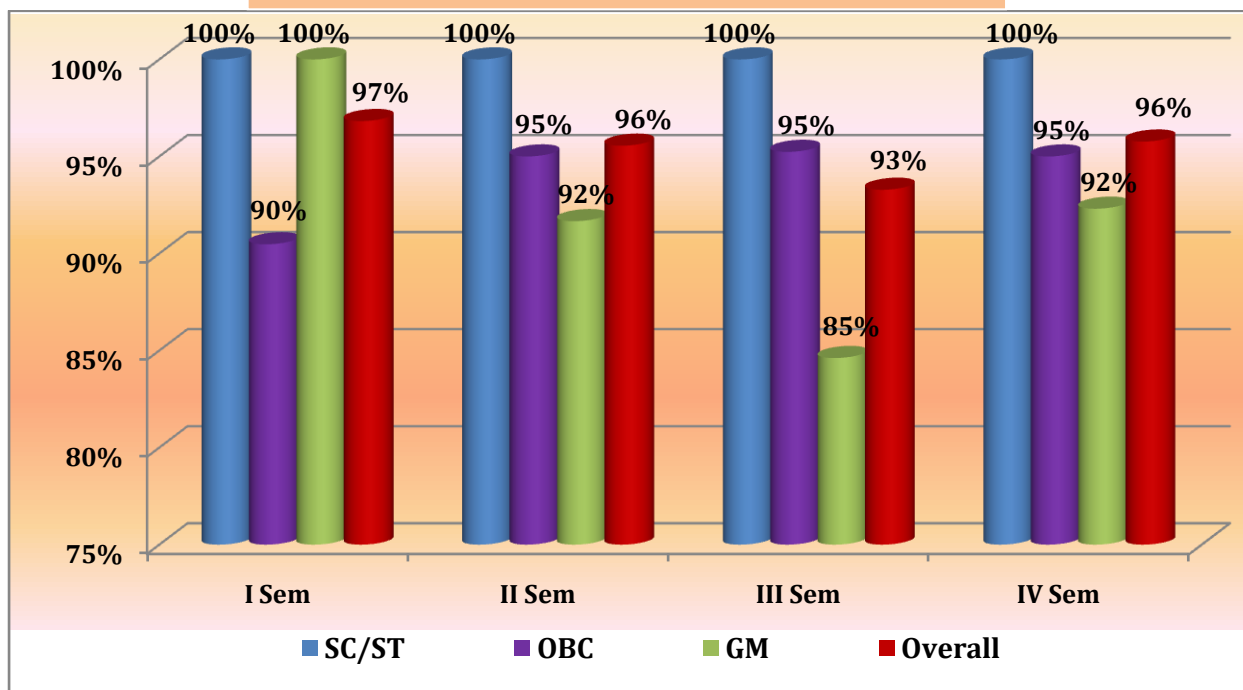




Batch -II : 2012- 2014

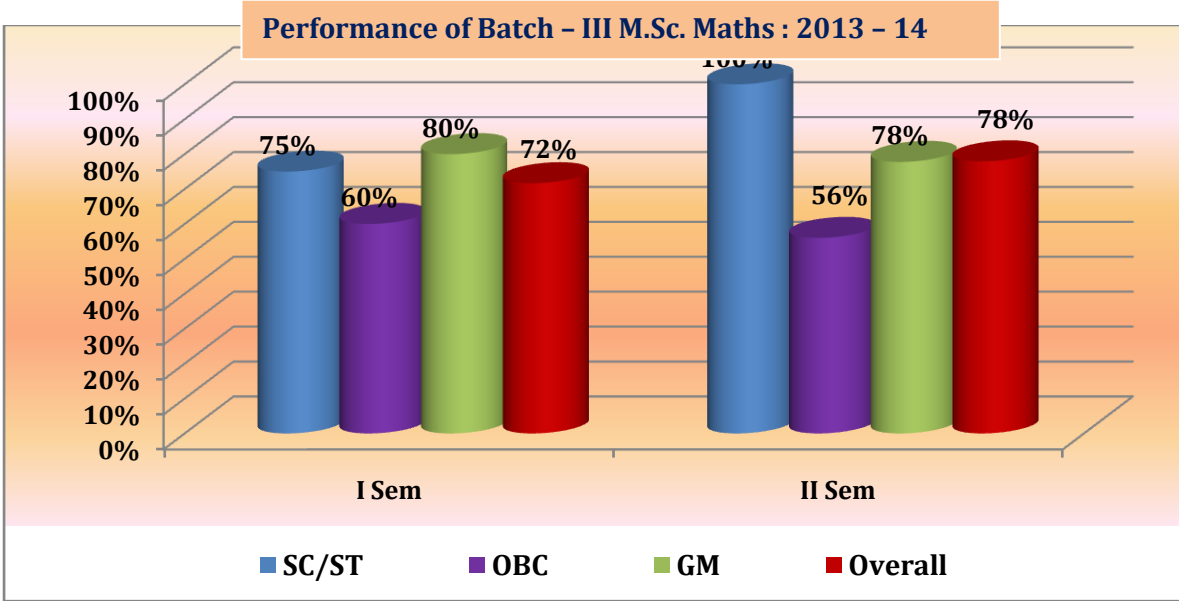
Category	I Sem	II Sem	III Sem	IV Sem
SC/ST	100%	100%	100%	100%
OBC	90%	95%	95%	95%
GM	100%	92%	85%	92%
Overall	97%	96%	93%	96%

Performance of Batch - II M.Sc. Maths : 2012 - 14



Batch - III : 2013

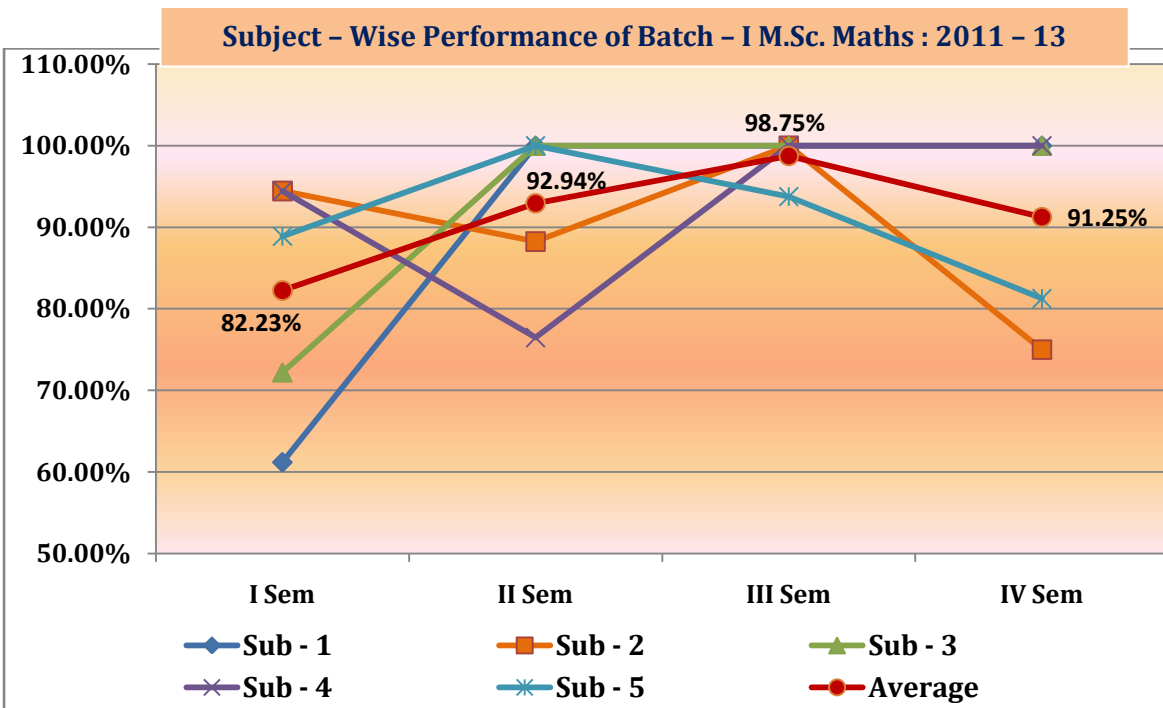
Category	I Sem	II Sem
SC/ST	75%	100%
OBC	60%	56%
GM	80%	78%
Overall	72%	78%



Subject - Wise Performance of students

Batch - I : 2011 - 13 - Subject Wise Performance

Semester	Sub - 1	Sub - 2	Sub - 3	Sub - 4	Sub - 5	Average
I Sem	61.17%	94.44%	72.22%	94.44%	88.89%	82.23%
II Sem	100.00%	88.24%	100.00%	76.47%	100.00%	92.94%
III Sem	100.00%	100.00%	100.00%	100.00%	93.75%	98.75%
IV Sem	100.00%	75.00%	100.00%	100.00%	81.25%	91.25%

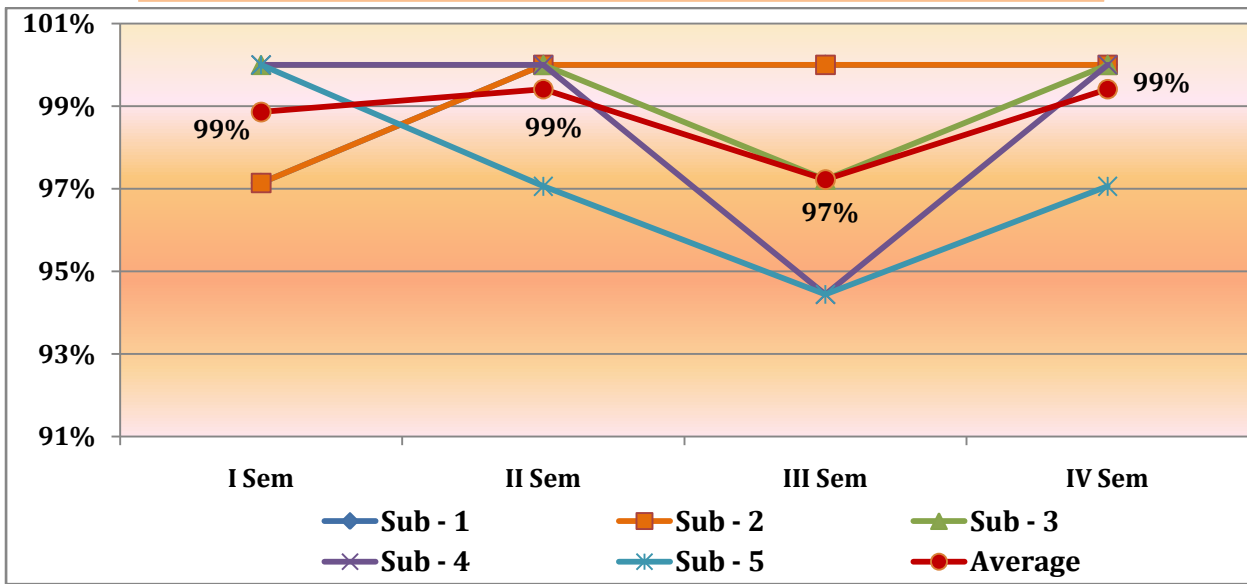




Batch - II: 2012 - 14 - Subject Wise Performance

Semester	Sub - 1	Sub - 2	Sub - 3	Sub - 4	Sub - 5	Average
I Sem	97%	97%	100%	100%	100%	99%
II Sem	100%	100%	100%	100%	97%	99%
III Sem	100%	100%	97%	94%	94%	97%
IV Sem	100%	100%	100%	100%	97%	99%

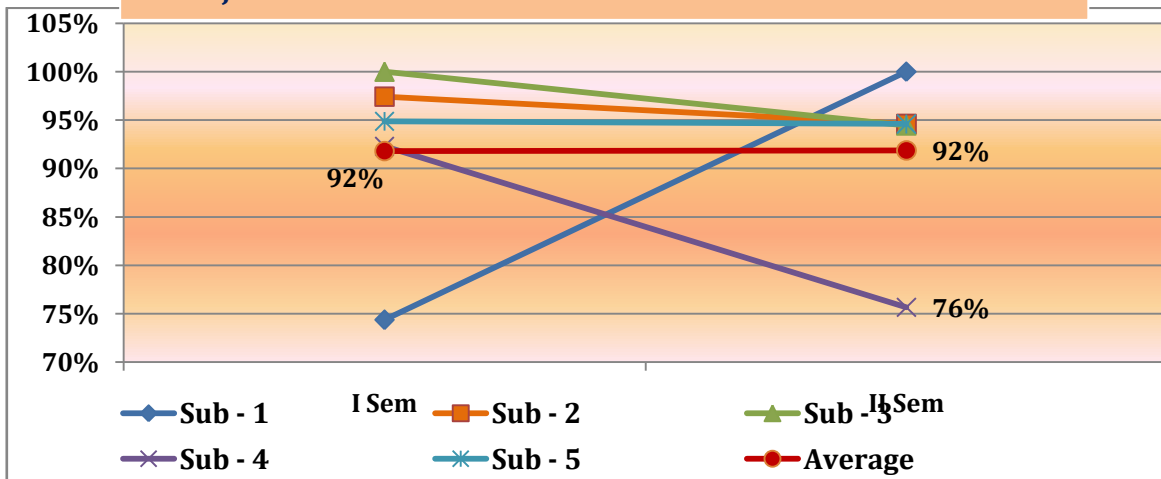
Subject - Wise Performance of Batch - II M.Sc. Maths : 2012 - 14



Batch - III : 2013 Subject Wise Performance

Semester	Sub - 1	Sub - 2	Sub - 3	Sub - 4	Sub - 5	Average
I Sem	74%	97%	100%	92%	95%	92%
II Sem	100%	95%	94%	76%	95%	92%

Subject - Wise Performance of Batch - III M.Sc. Maths : 2013 - 14





Student Achievers

Year	Name of the Student	Achievement
2013 - 14 May/June 2014 exam For the year 2014 - 15	Arpitha J S Reg.No. : 12BVSM3002 Total Marks : 1742/2000; 87.1%	Secured 2nd Rank in the university examinations
2013 - 14 May/June 2014 exam For the year 2014 - 15	Anjali C Reg.No. : 12BVSM3001 Total Marks : 1716/2000; 85.8%	Secured 5th Rank in university examinations

Year	Name of the Student	Achievement
2012 - 13	ABHISHEK BHARADWAJ	<ul style="list-style-type: none"> • UGC - NET : ALL INDIA RANK : 158 ROLL NO. : 400011 • GATE ALL INDIA RANK : 15 REGN. NO. : 16351101

35. SWOC analysis of the department and Future plans**Strengths**

1. PG Library with wide range of books
2. Students under university quota opt our college as first preference in private affiliated college category due to reputation of Vijaya College.
3. Qualified and Sincere faculties.
4. Good results and ranks to the college

Weakness

1. Shortage of Faculty (Due to increase in work load by the NEW CBCS System introduced by Bangalore University)

Opportunities

1. Research activities in collaboration with different organizations
2. Acquiring funds for minor research projects from UGC/DST
3. Coaching classes for NET / SLET

Challenges

1. Students (of first semester) face the difficulties in adjusting to PG learning from UG learning.
2. Decline in number of students opting for pure sciences.
