

DEPARTMENT OF KANNADA

1.	Name of the department	KANNADA	
2.	Year of Establishment	1945	
3.	Names of Programmes / Courses offered (UG, PG, M.Phil., Ph.D., Integrated Masters; Integrated Ph.D., etc.)	B.Sc. B.Com. BCA BBM	
4.	Names of Interdisciplinary courses and the departments/units involved	NIL	
5.	Annual/ semester/choice based credit system (programme wise)	Semester System : Prior to 2014 - 15 Choice Based Credit system: 2014 - 15 onwards	
6.	Participation of the department in the courses offered by other departments	NIL	
7.	Courses in collaboration with other universities, industries, foreign institutions, etc.	NIL	
8.	Details of courses/programmes discontinued (if any) with reasons	NIL	
9.	Number of teaching posts		
	Designation	Sanctioned	
	Filled		
	Professors	NIL	NIL
	Associate Professors	1	1
	Asst. Professors	3	3

10. Faculty profile with name, qualification, designation, specialization, (D.Sc./D.Litt. /Ph.D. / M. Phil. etc.,)

Name	Qualification	Designation	Specialization	No. of Years of Experience	No. of Ph.D. Students guided for the last 4 years
Dr.D.Gurumurthy	M.A., Ph.D.,	Assistant professor		25 Years	01
Dr.D.Siddaraju	M.A.,M.Phil., Ph.D.	Associate Professor	Folklore	22 Years	Nil
Dr.B.C.Rajakumar	M.A., Ph.D.,	Assistant professor	Comparative Studies	18 Years	NIL
Vaadiraj R	M.A.	Assistant professor		15 Years	NIL

11.	List of senior visiting faculty	NIL	
12.	Percentage of lectures delivered and practical classes handled (programme wise) by temporary faculty	NIL	
13.	Student -Teacher Ratio (programme wise)	B.Sc.	129 : 1
		B.Com.	155 : 1
		BCA	25 : 1
		BBM	29 : 1
		TOTAL	338 : 1
14.	Number of academic support staff	Sanctioned	Filled
		NIL	NIL
15.	Qualifications of teaching faculty with D Sc/ D.Litt. / Ph.D. / MPhil / PG	Ph.D	03
		M.Phil.	NIL
		PG	01

16.	Number of faculty with ongoing projects from	NIL
	National Funding Agency	NIL
	International Funding Agency	NIL
17.	Departmental projects funded by DST - FIST; UGC, DBT, ICSSR, etc. and total grants received.	NIL
18.	Research Centre /facility recognized by the University	NIL
19.	Publications	NIL
	Publication per faculty	0
	Number of papers published in peer reviewed journals	0
	National Journals	00
	International Journals	00
	Books Edited	NIL
	Books Edited with ISBN Numbers	NIL
	Impact factor	NIL
	h - index	NIL
20.	Areas of consultancy and income generated	NIL
21.	Faculty as members in	

	a. National Committees	NIL
	b. International Committees	NIL
	c. Editorial Boards	NIL
22.	Student projects	
	a) Percentage of students who have done in-house projects including inter departmental/programme	NIL
	b) Percentage of students placed for projects in organizations outside the institution i.e.in Research laboratories/Industry/other agencies	NIL
23.	Awards and Recognitions received by faculty and students	NIL
24.	List of Eminent academicians and scientists / Visitors to the department	NIL
25.	Seminars/ Conferences/Workshops organized & the source of funding National International	NIL
26.	Student profile programme/course wise	

Year	Name of the Course / Programme	Applications Received	Selected	Enrolled in I Year		TOTAL All Years	Pass Percentage (outgoing students)
				Male	Female		
2010 - 11	B.Sc.	278	278	140	138	522	95.00%
	B.Com.	1265	222	112	110	435	88.26%
	BCA	102	40	22	18	73	100.00%
	BBM	180	39	22	17	78	89.74%
	Grand	1825	579	296	283	1108	

Year	Name of the Course / Programme	Applications Received	Selected	Enrolled in I Year		TOTAL All Years	Pass Percentage (outgoing students)
				Male	Female		
	Total						
2011 - 12	B.Sc.	185	185	85	100	454	91.73%
	B.Com.	1166	212	105	107	441	97.26%
	BCA	205	41	22	19	80	97.06%
	BBM	121	31	20	11	67	91.67%
	Grand Total	1677	469	232	237	1042	
2012 - 13	B.Sc.	202	202	115	87	366	88.59%
	B.Com.	1315	263	136	127	461	95.98%
	BCA	347	28	20	8	67	100.00%
	BBM	126	29	21	8	56	96.43%
	Grand Total	1990	522	292	230	950	
2013 - 14	B.Sc.	287	287	148	139	480	94.30%
	B.Com.	1280	319	167	152	570	96.12%
	BCA	171	48	22	26	75	96.30%
	BBM	104	55	34	21	83	93.10%
	Grand Total	1842	709	371	338	1208	
2014 - 15	B.Sc.	252	252	133	119	516	
	B.Com.	1336	314	167	147	620	
	BCA	150	47	22	25	99	
	BBM	158	51	32	19	106	
	Grand Total	1896	664	354	310	1341	

27. Diversity of Students

Name of the Course	% of students from the	% of students from other States	% of students from
B.Sc.	100%	NIL	NIL
B.Com.	100%	NIL	NIL

Name of the Course	% of students from the	% of students from other States	% of students from
BCA	100%	NIL	NIL
BBM	100%	NIL	NIL

28. How many students have cleared national and state competitive examinations such as NET, SLET, GATE, Civil services, Defense services, etc.?

Not Applicable

29. Student progression

Student progression	Against % enrolled
UG to PG	Data Not Available
PG to M.Phil.	Data Not Available
PG to Ph.D.	Data Not Available
Ph.D. to Post-Doctoral	Data Not Available
Employed <ul style="list-style-type: none"> • Campus selection • Other than campus recruitment 	Data Not Available
Entrepreneurship/Self-employment	

30.	Details of Infrastructural facilities	
a.	LIBRARY	
	Books Main Library	7316 Books
b.	Internet facilities for Staff & Students	Available
c.	Class rooms with ICT facility	07 Class rooms
d.	Laboratories	NIL
31.	Number of students receiving financial assistance from college, university, Government or other agencies	Data furnished under student support services
32.	Details of Student Enrichment Programmes	NIL

33. Teaching methods adopted to improve student learning

- * Chalk and talk method
- * Student Assignments
- * Student Seminars
- * Role Plays

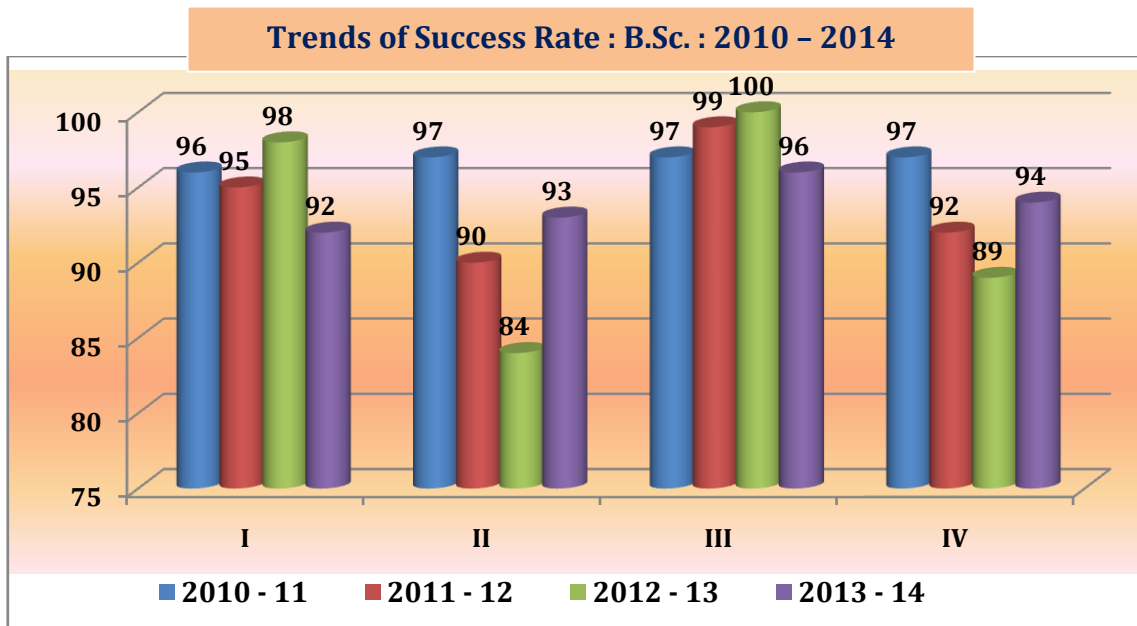
34. Participation in Institutional Social Responsibility (ISR) and Extension activities

- One of the staff member is NSS officer
- Participation in environmental awareness programmes
- Participation in National Festivals

I. Trends of Success Rate of students : 2010 - 2014

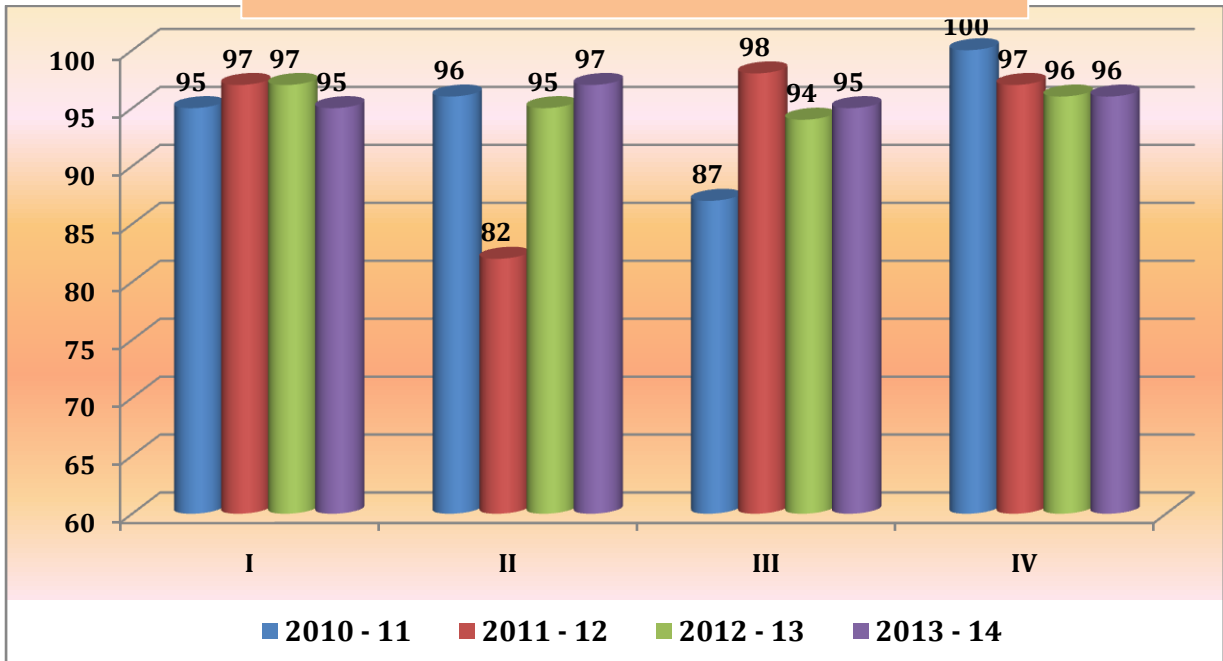
A. Stream : B.Sc.

Sem	2010 - 11	2011 - 12	2012 - 13	2013 - 14
I	96	95	98	92
II	97	90	84	93
III	97	99	100	96
IV	97	92	89	94



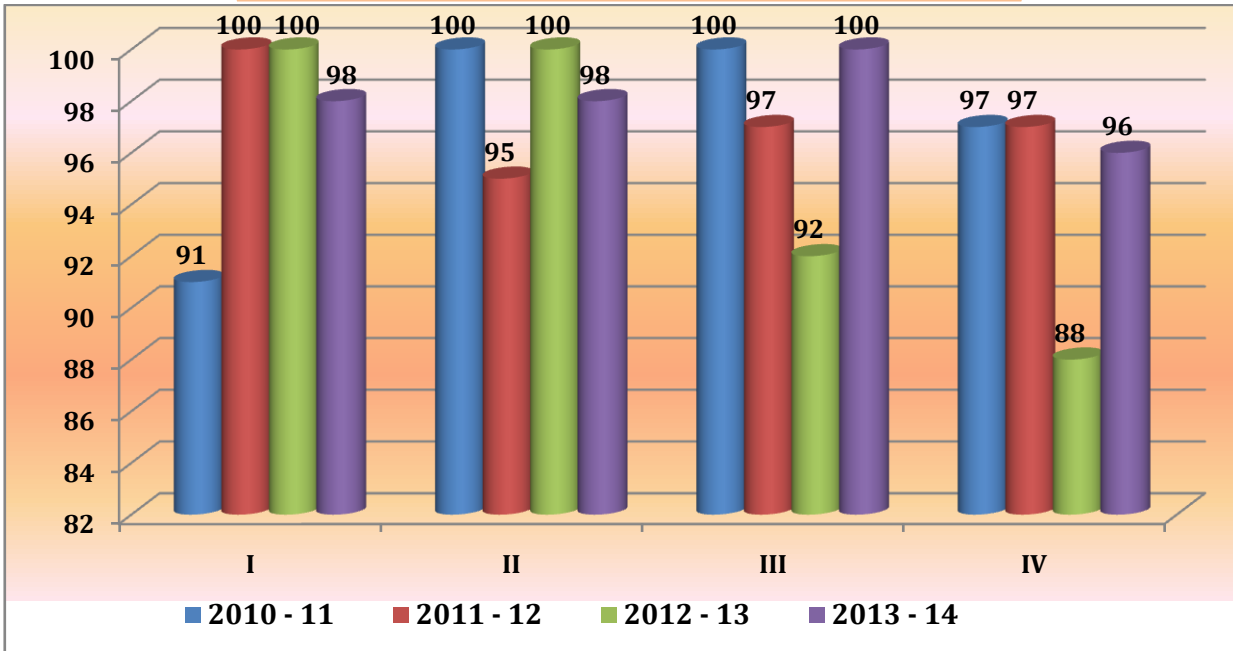
B. Stream : B.Com.

Sem	2010 - 11	2011 - 12	2012 - 13	2013 - 14
I	95	97	97	95
II	96	82	95	97
III	87	98	94	95
IV	100	97	96	96

Trends of Success Rate : B.Com. : 2010 - 2014**C. Stream : BCA**

Sem	2010 - 11	2011 - 12	2012 - 13	2013 - 14
I	91	100	100	98
II	100	95	100	98
III	100	97	92	100
IV	97	97	88	96

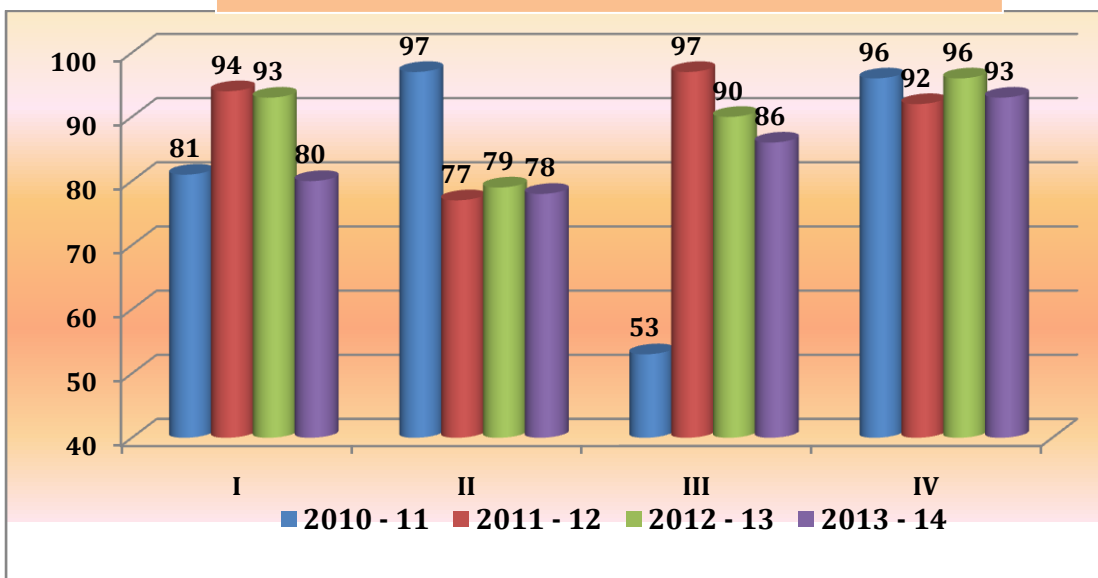
Trends of Success Rate : BCA : 2010 - 2014



D. Stream : BBM

Sem	2010 - 11	2011 - 12	2012 - 13	2013 - 14
I	81	94	93	80
II	97	77	79	78
III	53	97	90	86
IV	96	92	96	93

Trends of Success Rate : BBM : 2010 - 2014



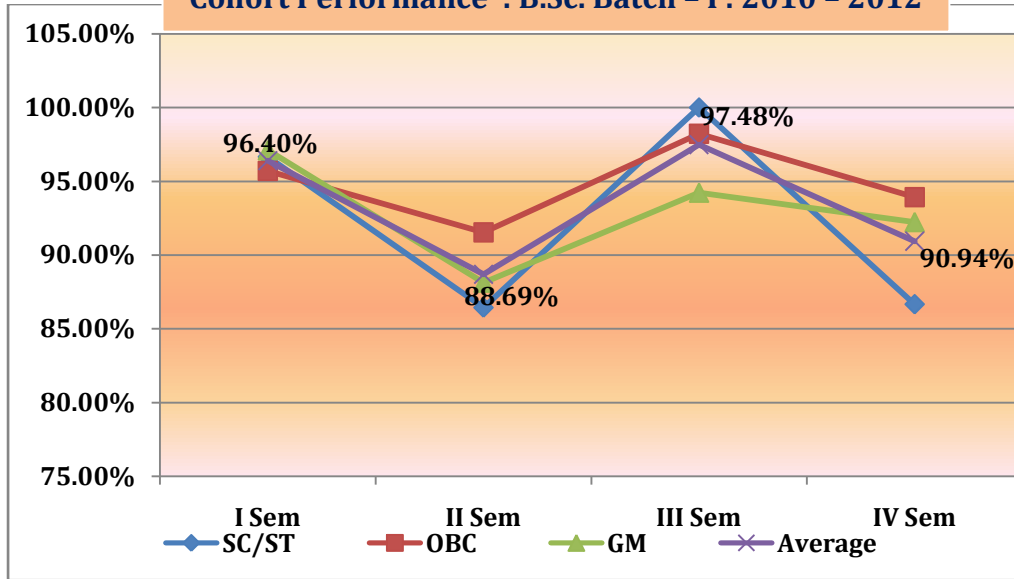
II. Cohort Performance of Kannada students

Stream : B.Sc.

Batch - I : 2010 - 12

Category	I Sem	II Sem	III Sem	IV Sem
SC/ST	96.67%	86.44%	100.00%	86.67%
OBC	95.69%	91.53%	98.21%	93.91%
GM	97.12%	88.12%	94.23%	92.23%
Average	96.40%	88.69%	97.48%	90.94%

Cohort Performance : B.Sc. Batch - I : 2010 - 2012

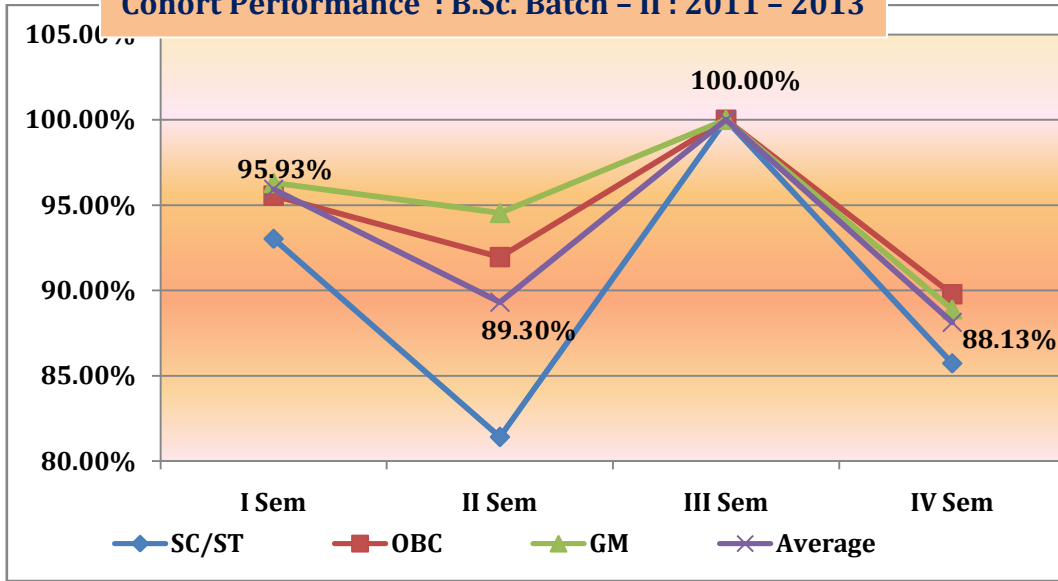


Batch - II : 2011 - 13

Category	I Sem	II Sem	III Sem	IV Sem
SC/ST	93.02%	81.40%	100.00%	85.71%
OBC	95.56%	91.95%	100.00%	89.77%
GM	96.30%	94.55%	100.00%	88.89%
Average	95.93%	89.30%	100.00%	88.13%



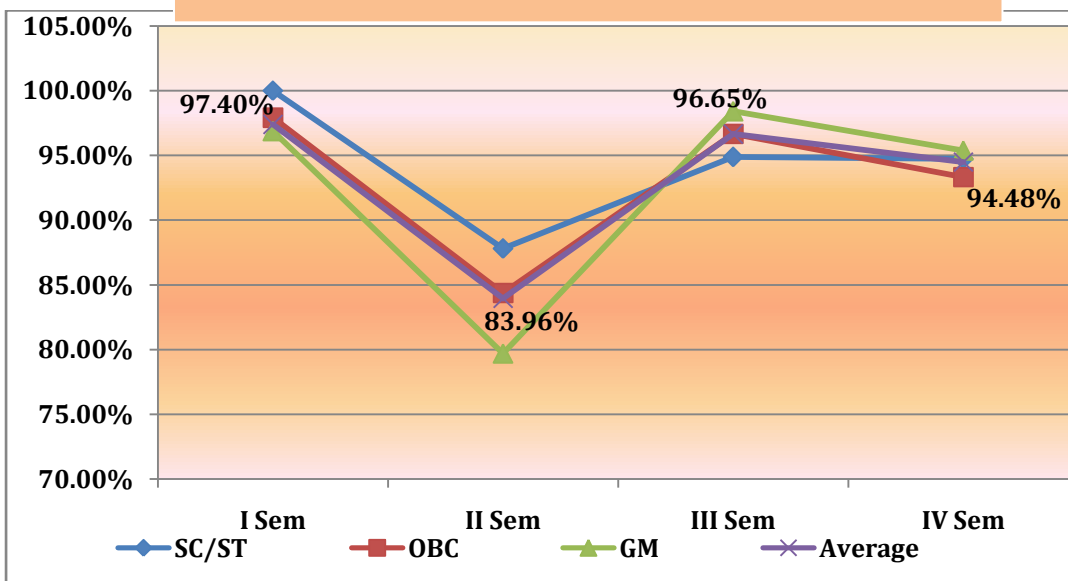
Cohort Performance : B.Sc. Batch - II : 2011 - 2013



Batch - III : 2012 - 14

Category	I Sem	II Sem	III Sem	IV Sem
SC/ST	100.00%	87.80%	94.87%	94.74%
OBC	97.92%	84.38%	96.67%	93.33%
GM	96.88%	79.71%	98.41%	95.38%
Average	97.40%	83.96%	96.65%	94.48%

Cohort Performance : B.Sc. Batch - III : 2012 - 2014

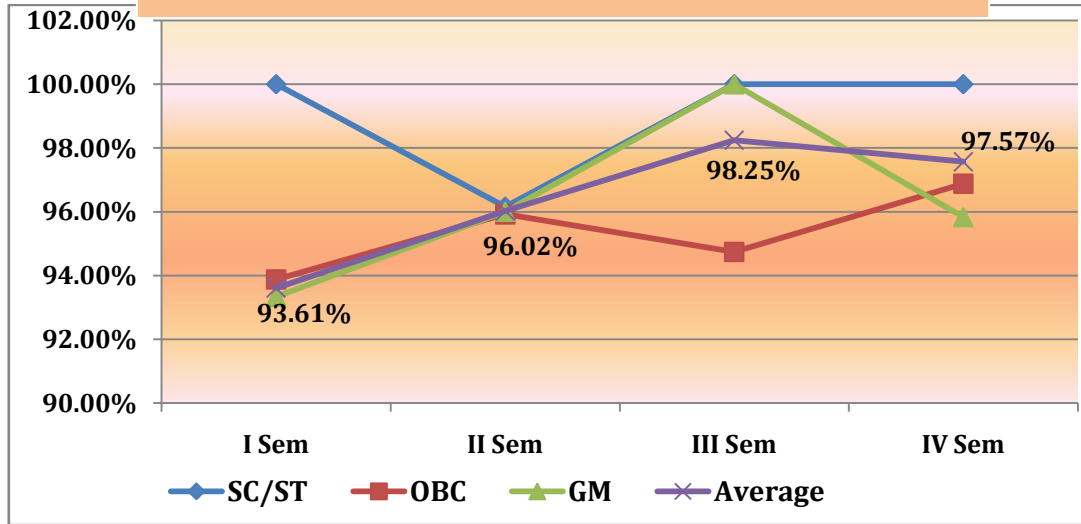


Stream : B.Com.

Batch - I : 2010 - 12

Category	I Sem	II Sem	III Sem	IV Sem
SC/ST	100.00%	96.15%	100.00%	100.00%
OBC	93.88%	95.92%	94.74%	96.88%
GM	93.33%	96.00%	100.00%	95.83%
Average	93.61%	96.02%	98.25%	97.57%

Cohort Performance : B.Com. Batch - I : 2010 - 2012

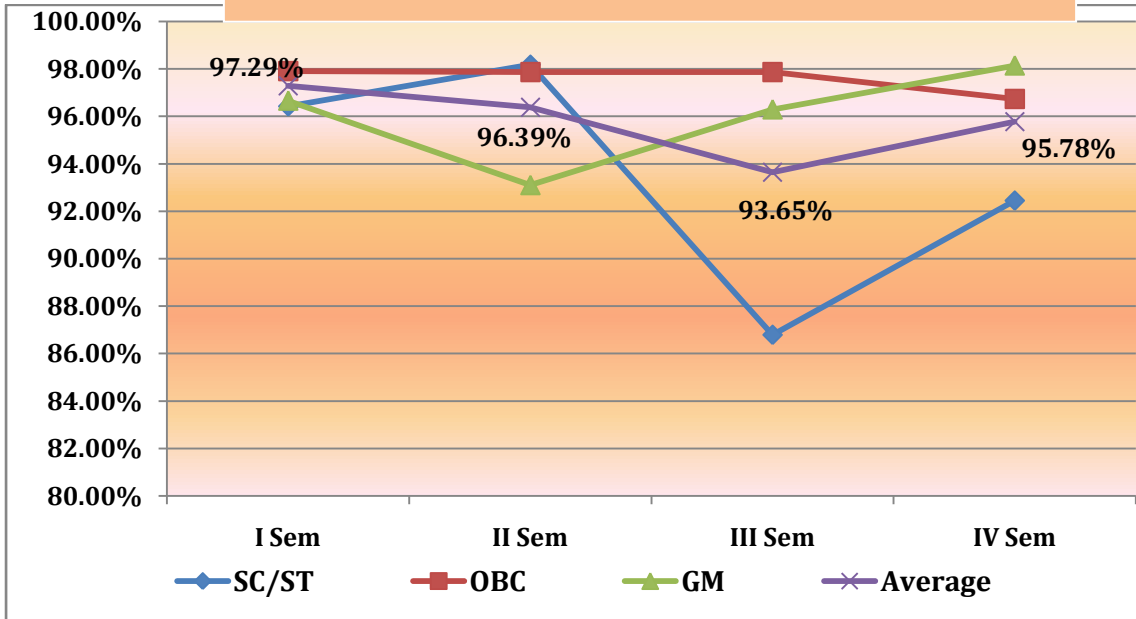


Batch - II : 2011 - 13

Category	I Sem	II Sem	III Sem	IV Sem
SC/ST	96.43%	98.18%	86.79%	92.45%
OBC	97.92%	97.87%	97.87%	96.74%
GM	96.67%	93.10%	96.30%	98.15%
Average	97.29%	96.39%	93.65%	95.78%



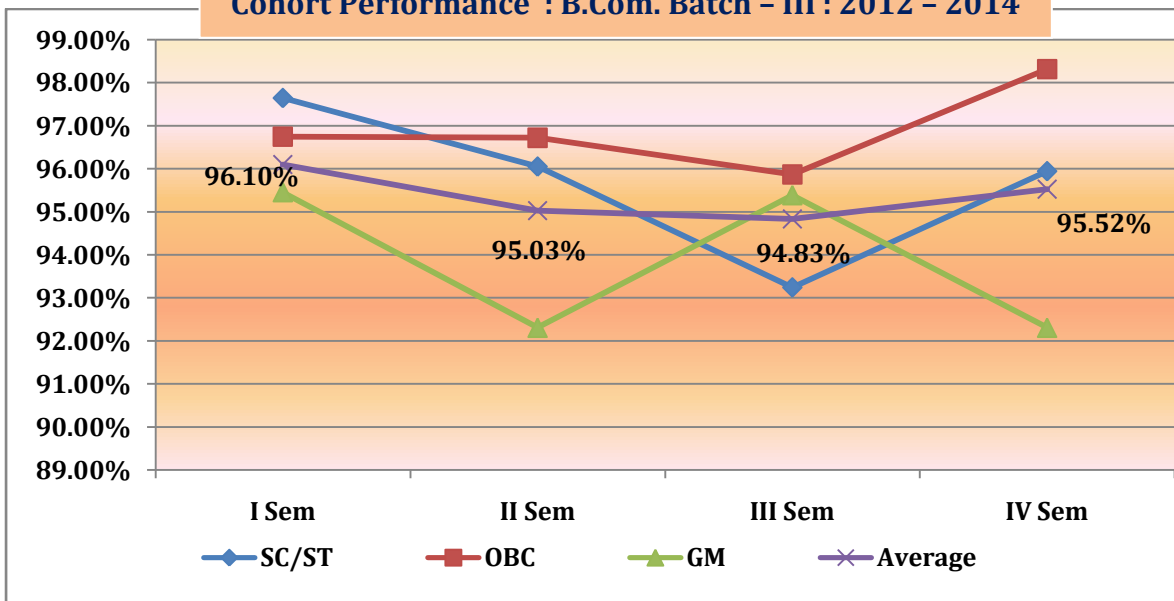
Cohort Performance : B.Com. Batch - II : 2011 - 2013



Batch - III : 2012 - 14

Category	I Sem	II Sem	III Sem	IV Sem
SC/ST	97.65%	96.05%	93.24%	95.95%
OBC	96.75%	96.72%	95.87%	98.32%
GM	95.45%	92.31%	95.38%	92.31%
Average	96.10%	95.03%	94.83%	95.52%

Cohort Performance : B.Com. Batch - III : 2012 - 2014

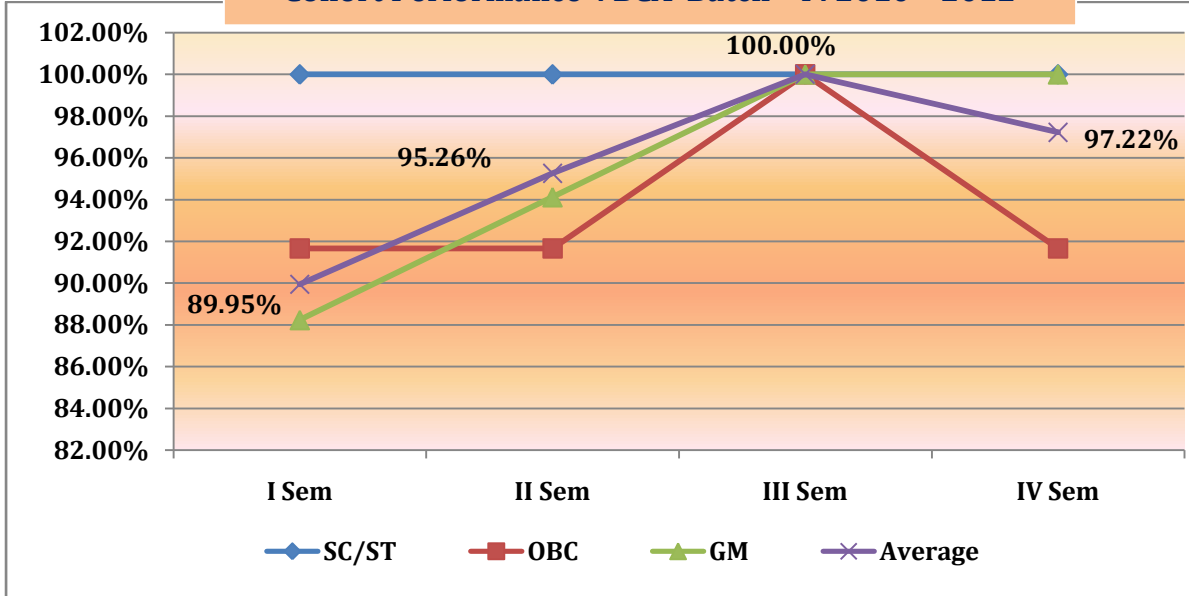


Stream : BCA

Batch - I : 2010 - 12

Category	I Sem	II Sem	III Sem	IV Sem
SC/ST	100.00%	100.00%	100.00%	100.00%
OBC	91.67%	91.67%	100.00%	91.67%
GM	88.24%	94.12%	100.00%	100.00%
Average	89.95%	95.26%	100.00%	97.22%

Cohort Performance : BCA Batch - I : 2010 - 2012

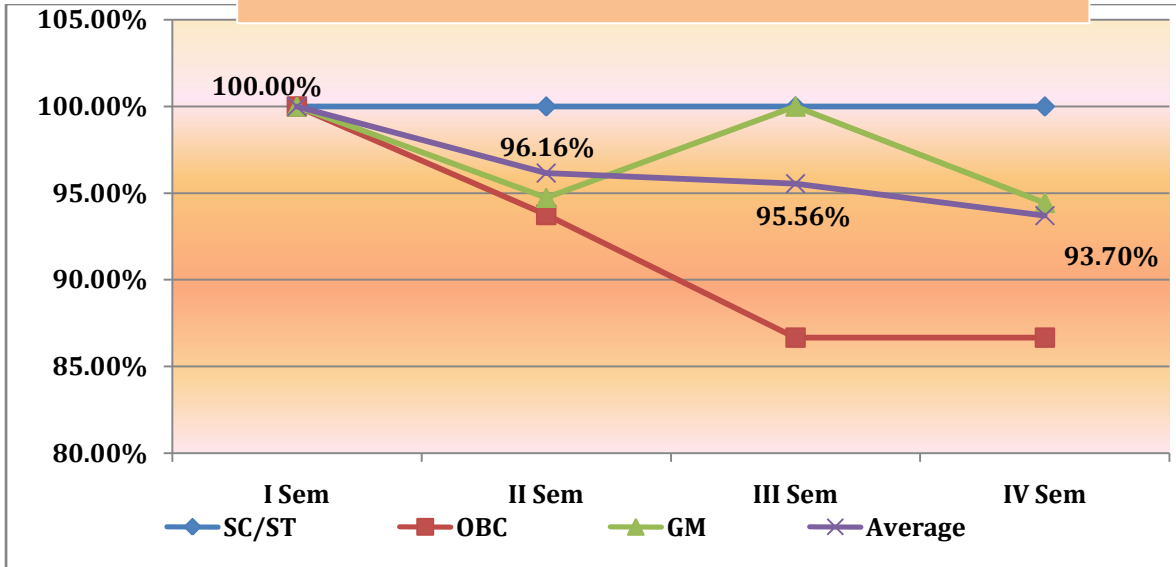


Batch - II : 2011 - 13

Category	I Sem	II Sem	III Sem	IV Sem
SC/ST	100.00%	100.00%	100.00%	100.00%
OBC	100.00%	93.75%	86.67%	86.67%
GM	100.00%	94.74%	100.00%	94.44%
Average	100.00%	96.16%	95.56%	93.70%



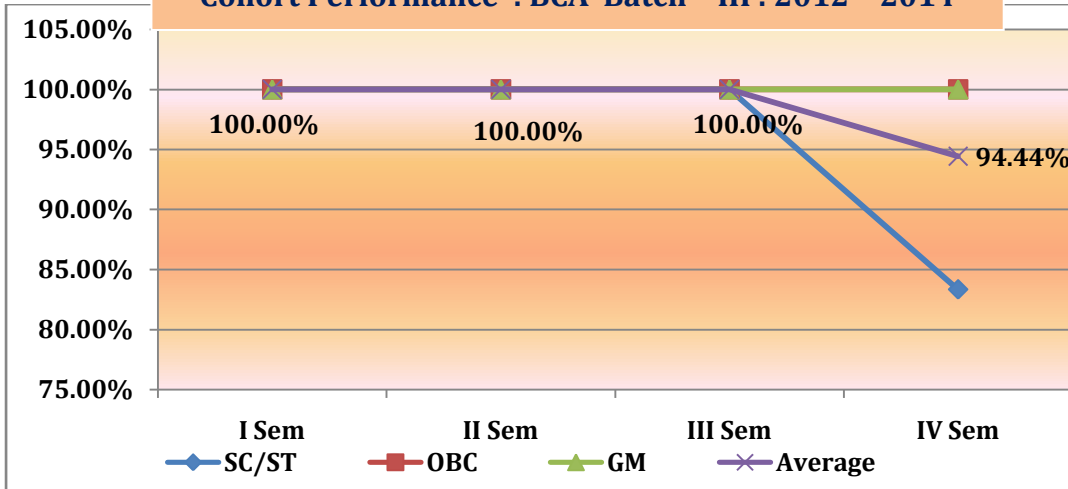
Cohort Performance : BCA Batch - II : 2011 - 2013



Batch - III : 2012 - 14

Category	I Sem	II Sem	III Sem	IV Sem
SC/ST	100.00%	100.00%	100.00%	83.33%
OBC	100.00%	100.00%	100.00%	100.00%
GM	100.00%	100.00%	100.00%	100.00%
Average	100.00%	100.00%	100.00%	94.44%

Cohort Performance : BCA Batch - III : 2012 - 2014

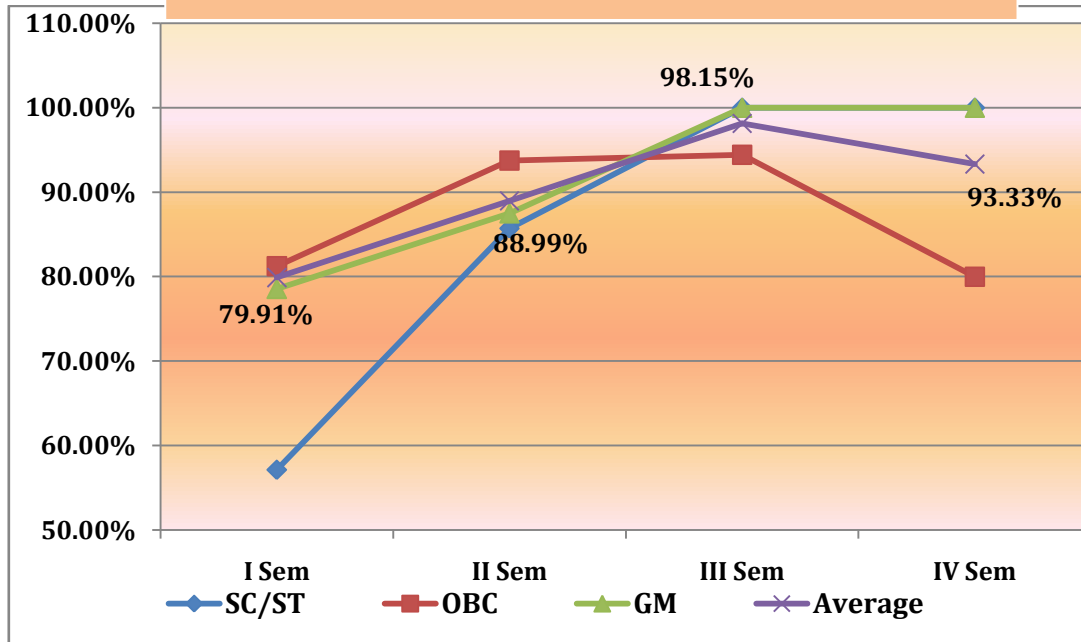


Stream : BBM

Batch - I : 2010 - 12

Category	I Sem	II Sem	III Sem	IV Sem
SC/ST	57.14%	85.71%	100.00%	100.00%
OBC	81.25%	93.75%	94.44%	80.00%
GM	78.57%	87.50%	100.00%	100.00%
Average	79.91%	88.99%	98.15%	93.33%

Cohort Performance : BBM Batch - I : 2010 - 2012

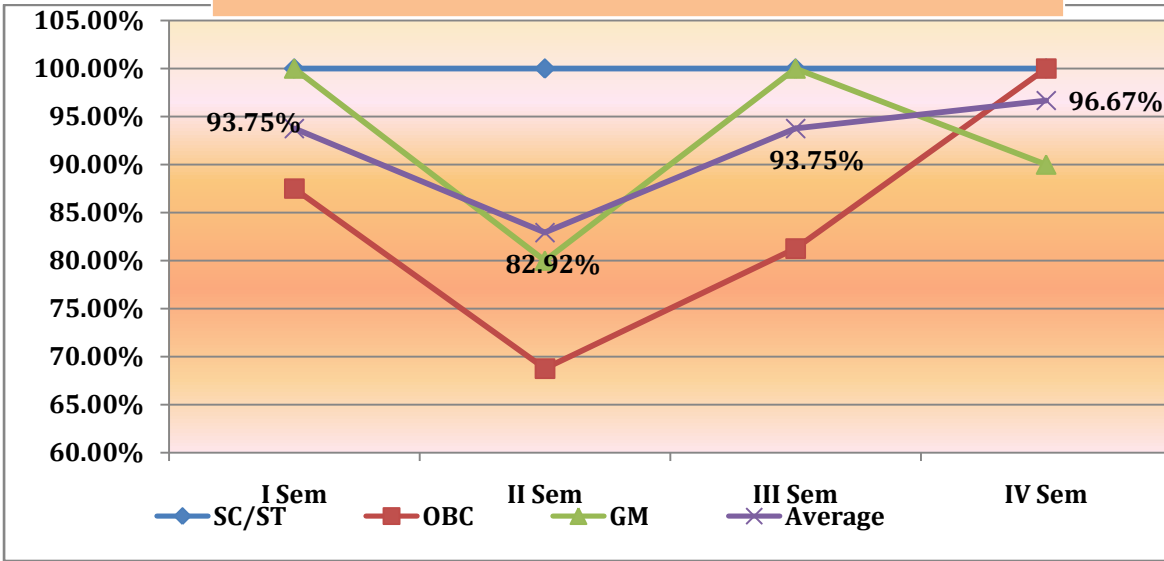


Batch - II : 2011 - 13

Category	I Sem	II Sem	III Sem	IV Sem
SC/ST	100.00%	100.00%	100.00%	100.00%
OBC	87.50%	68.75%	81.25%	100.00%
GM	100.00%	80.00%	100.00%	90.00%
Average	93.75%	82.92%	93.75%	96.67%



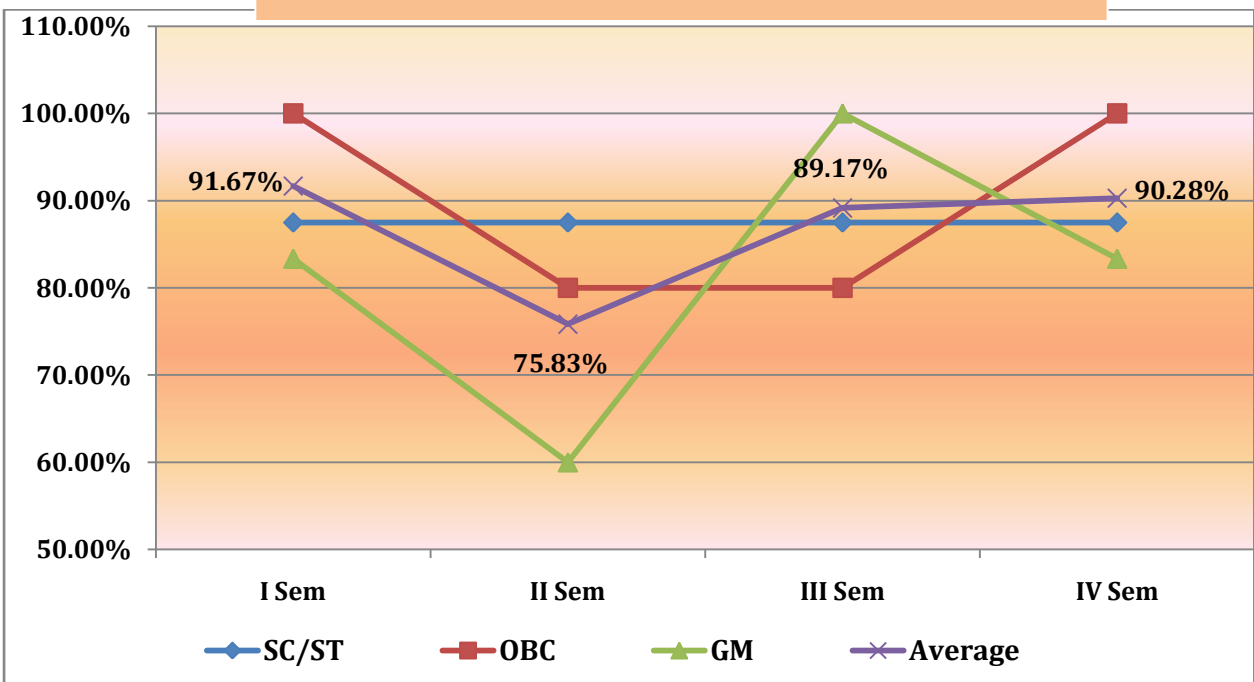
Cohort Performance : BBM Batch - II : 2011 - 2013



Batch - III : 2012 - 14

Category	I Sem	II Sem	III Sem	IV Sem
SC/ST	87.50%	87.50%	87.50%	87.50%
OBC	100.00%	80.00%	80.00%	100.00%
GM	83.33%	60.00%	100.00%	83.33%
Average	91.67%	75.83%	89.17%	90.28%

Cohort Performance : BCA Batch - III : 2012 - 2014



35. SWOC analysis of the department and Future plans

Strengths

- Well qualified and dedicated teachers
- Consistent and adequate student strength in all streams
- Very good and consistent results in the department over a long period

Weaknesses

- Lack of arts combination in the college and Kannada as an optional subject
- Lack of ICT in the subject teaching pedagogy due to limited technological support for the language

Opportunities

- Use of existing classical movies to introduce role plays in subject relevant areas
- Field trips to places of heritage importance and archeological importance
- Media writing and script writing courses for students to enhance employability in electronic and print media
- Theatre club to promote the learning through role plays and dramatization

Challenges

- Limited Job opportunities to students of Kannada and thus has remained only as an academic discipline

Future Plan

- Float a theatre club in the college and conduct inter – collegiate theatre competitions
