



## DEPARTMENT OF GENETICS

1.	Name of the department	GENETICS	
2.	Year of Establishment	2007	
3.	Names of Programmes / Courses offered (UG, PG, M.Phil., Ph.D., Integrated Masters; Integrated Ph.D., etc.)	B.Sc. : BcGmb	
4.	Names of Interdisciplinary courses and the departments/units involved	NIL	
5.	Annual/ semester/choice based credit system (programme wise)	Semester System : Prior to 2014 – 15 Choice Based Credit system: 2014 – 15 onwards	
6.	Participation of the department in the courses offered by other departments	NIL	
7.	Courses in collaboration with other universities, industries, foreign institutions, etc.	NIL	
8.	Details of courses/programmes discontinued (if any) with reasons	NIL	
9.	<b>Number of teaching posts</b>		
	<b>Designation</b>	<b>Sanctioned</b>	
	<b>Filled</b>		
	Professors	NIL	NIL
	Associate Professors	NIL	NIL
	Asst. Professors	2	2



10. Faculty profile with name, qualification, designation, specialization, (D.Sc./D.Litt. /Ph.D. / M. Phil. etc.,)

Sl. No.	Name	Qualification	Designation	Specialization	No. of Years of Experience
1	Dr. Priyadarshini.P.A	M.Sc., Ph.D	Asst. Professor	Applied Genetics	09
2	Jalajakshi.S	M.Sc., M.Phil	Asst. Professor	Applied Genetics	09

11.	List of senior visiting faculty	NIL	
12.	Percentage of lectures delivered and practical classes handled (programme wise) by temporary faculty	NIL	
13.	Student -Teacher Ratio (programme wise)	12 : 1	
14.	Number of academic support staff	<b>Sanctioned</b>	<b>Filled</b>
		01	01
15.	Qualifications of teaching faculty with D Sc/ D.Litt. / Ph.D. / MPhil / PG	Ph.D	01
		M.Phil.	01
16.	Number of faculty with ongoing projects from	NIL	
	National Funding Agency	01	
	International Funding Agency	NIL	
	Grants Received	Rs.1,80,000=00 from UGC	
	<b>UGC MRP Project Title : "The Study on Distribution, Haemocytes, Chromosomal and Molecular Approach of Spiders in selected Areas of Bengaluru"</b>		
17.	Departmental projects funded by DST - FIST; UGC, DBT, ICSSR, etc. and total grants received.	NIL	



18.	Research Centre /facility recognized by the University	NIL
19.	Publications	
	Publication per faculty	3
	Number of papers published in peer reviewed journals	6
	National Journals	00
	International Journals	06
	Books Edited	NIL
	Books Edited with ISBN Numbers	NIL
	Impact factor	2.67
	h - index	

### Details of Papers published in international Journals

Sl. No.	Name of the Faculty	TITLE OF THE PAPER	JOURNAL	Year	IMPACT FACTOR	CITATIONS
1	Priyadarshini.P.A	Fatty Acid Composition in Pupae Oil of <i>Philosamia ricini</i>	Current Research in Microbiology and Biotechnology(C RMB)	2014	2.1	



Sl. No.	Name of the Faculty	TITLE OF THE PAPER	JOURNAL	Year	IMPACT FACTOR	CITATIONS
2	Priyadarshini.P.A	Estimation of crude and purified protein from de-oiled pupae of eri silkworm, <i>philosamia ricini</i>	International Research Journal of Pharmaceutical and Applied Sciences (IRJPAS)	2014	3.8	
3	Priyadarshini.P.A	Physical and biochemical properties of oil extracted from eri silkworm <i>philosamia ricini</i> pupae	Journal of Medicinal Chemistry and Drug Discovery	2014	5.1	
4	Jalajakshi	Sexual Size Dimorphism (SSD) and Morphometric Analysis of <i>Argiope anasuja</i> (Signature spider) of South Bangalore, Karnataka	International Journal of Current Research(IJCR)	2014	3.1	
5	Jalajakshi	Morphometry and Principle Component Analysis (PCA) Of Red House Spider <i>Nesticodes Rufipes</i> of South Bangalore, Karnataka	International Organization of Scientific Research(IOSR)	2014	1.1	



Sl. No.	Name of the Faculty	TITLE OF THE PAPER	JOURNAL	Year	IMPACT FACTOR	CITATIONS
6	Priyadarshini.P.A	Quantification of crude and extracted proteins from deoiled male and female pupae of eri silkworm, philosamia ricini	International Journal of Biology, Pharmacy and Allied Sciences(IJBPAS)	2013	0.81	

20.	Areas of consultancy and income generated	NIL
21.	Faculty as members in	
	a. National Committees	NIL
	b. International Committees	NIL
	c. Editorial Boards	NIL
22.	Student projects	
	a) Percentage of students who have done in-house projects including inter departmental/programme	60%
	b) Percentage of students placed for projects in organizations outside the institution i.e.in Research laboratories/Industry/ other agencies	NIL

### 23. Awards and Recognitions received by faculty and students

Smt Priyadarshini awarded the Inspiring Teachers Awards by Garden City College, Bangalore in 2012



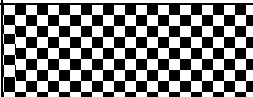
24.	<b>List of eminent academicians and scientists / visitors to the department</b>	
a.	Dr. M.R.N. MURTHY	Professor, Molecular Biophysics Unit, Indian Institute of Science
b.	Dr. Mitesh Shetty MBBS, M.Sc. (UK), Ph.D.	Consultant, Clinical Geneticist, Manipal Hospitals

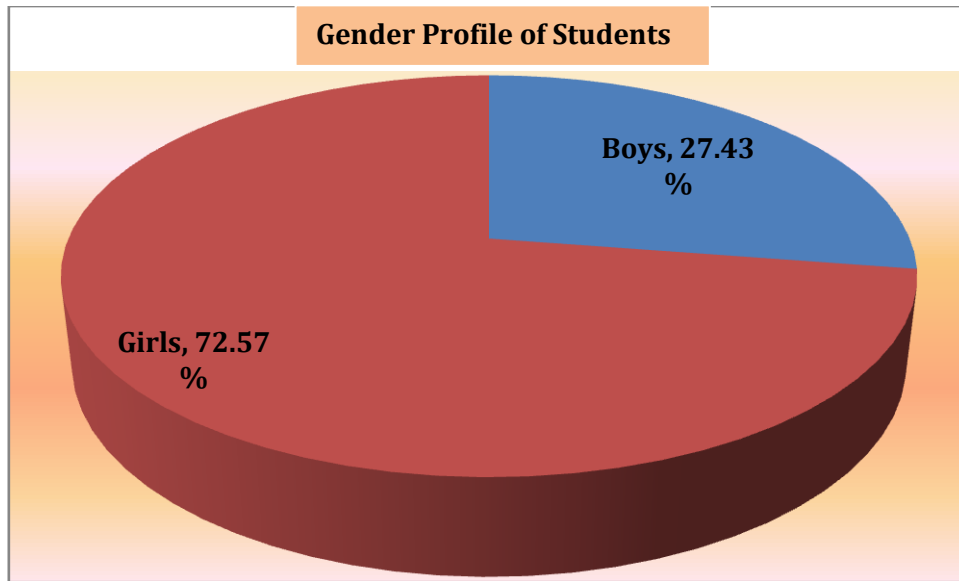
25.	Seminars/ Conferences/Workshops organized & the source of funding  National International	NIL
-----	---	-----

### 26. Student profile programme/course wise


Year	Name of the Course / Programme	Applications Received	Selected	Enrolled in I Year		TOTAL All Years	Pass Percentage (outgoing students)
				Male	Female		
2010 - 11	B.Sc.	17	17	6	11	57	100.00%
2011 - 12		21	21	6	15	54	91.30%
2012 - 13		16	16	6	10	45	91.67%
2013 - 14		30	30	7	23	65	88.24%
2014 - 15		24	24	6	18	73	

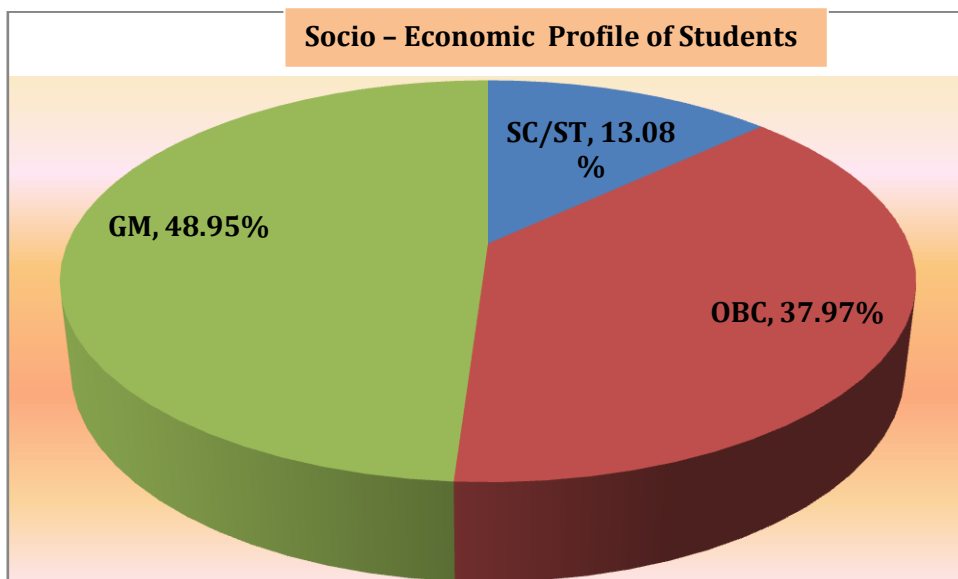
### Gender Profile of Students

Academic Year	Boys	Girls	Total
2011 - 12	14	40	54
2012 - 13	14	31	45
2013 - 14	18	47	65
2014 - 15	19	54	73
<b>Average Percentage</b>	<b>27.43%</b>	<b>72.57%</b>	



**Socio - economic profile of students**

Academic Year	SC/ST	OBC	GM	Total
2011 - 12	5	17	32	54
2012 - 13	5	20	20	45
2013 - 14	9	29	27	65
2014 - 15	12	24	37	73
<b>Average Percentage</b>	<b>13.08%</b>	<b>37.97%</b>	<b>48.95%</b>	





## 27. Diversity of Students

Name of the Course	% of students from the same state	% of students from other States	% of students from abroad
B.Sc.	100%	NIL	NIL

## 28. How many students have cleared national and state competitive examinations such as NET, SLET, GATE, Civil services, Defence services, etc.?

No Data Available

## 29. Student progression

Student progression	Against % enrolled
UG to PG	40%
PG to M.Phil.	NA
PG to Ph.D.	NA
Ph.D. to Post-Doctoral	NA
<b>Employed</b>	20%
• Campus selection	
• Other than campus recruitment	60%
Entrepreneurship/Self-employment	NIL

30.	Details of Infrastructural facilities	
a.	LIBRARY	
	<b>Books</b> Main Library	280 Books
b.	Internet facilities for Staff & Students	Available
c.	Class rooms with ICT facility	02 Class rooms and Laboratory





d.	Laboratories	01
	Area of the Laboratories	900 sq.ft. Shared with Biotechnology

31.	Number of students receiving financial assistance from college, university, Government or other agencies	Data furnished under student support services
32.	<b>Details of Student Enrichment Programmes</b>	
	Guest Lectures are organized periodically	

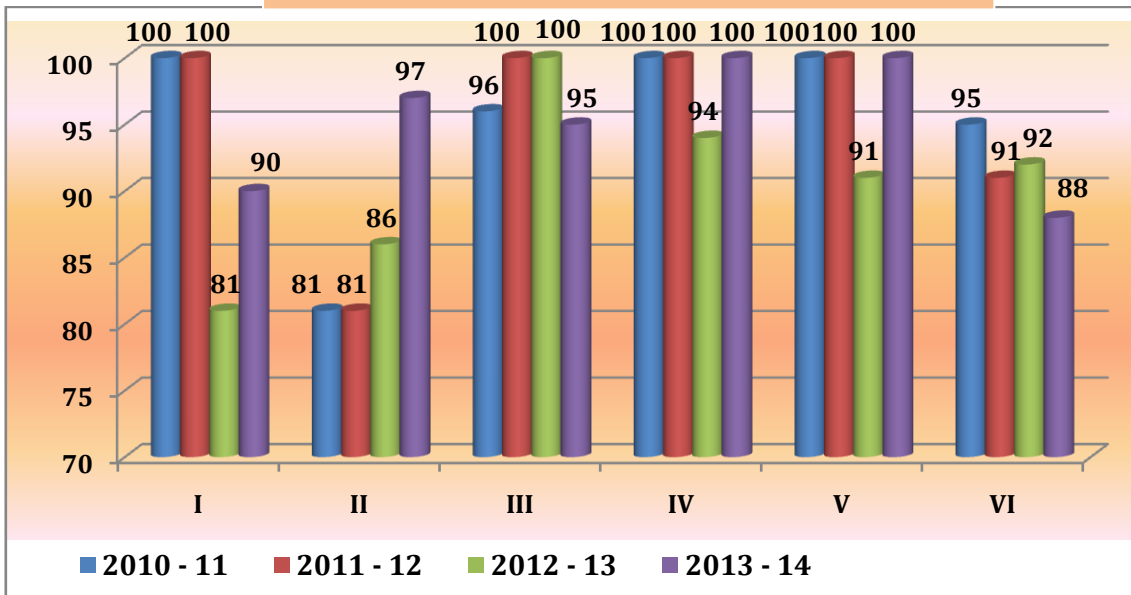
33. Teaching methods adopted to improve student learning
- Chalk and Talk
  - Visual charts
  - Permanent slides
  - CDs
  - Digital camera for cytological works.
34. Participation in Institutional Social Responsibility (ISR) and Extension activities:
- Participation in environmental awareness programmes
  - Participation in national festivals

#### I. Trends in Success Rate of Students : 2010 – 2014

Sem	2010 - 11	2011 - 12	2012 - 13	2013 - 14
I	100	100	81	90
II	81	81	86	97
III	96	100	100	95
IV	100	100	94	100
V	100	100	91	100
VI	95	91	92	88



**Success Rate of Genetics Students : 2010 - 2014**

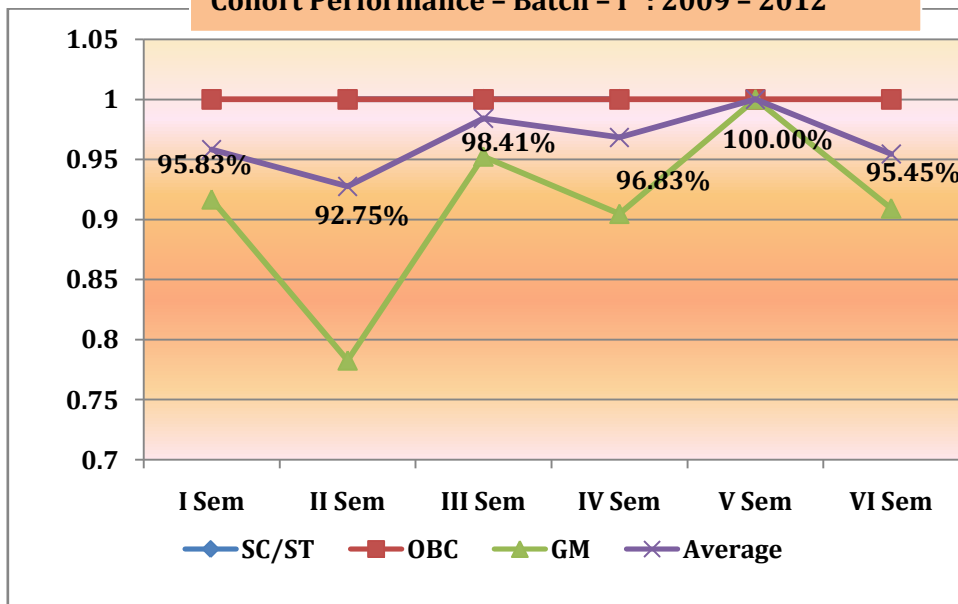


**II. Cohort Performance of Students : 2010 - 2014**

**Batch - I : 2009 - 12**

Category	I Sem	II Sem	III Sem	IV Sem	V Sem	VI Sem
SC/ST	NA	100.00%	100.00%	100.00%	NA	NA
OBC	100.00%	100.00%	100.00%	100.00%	100.00%	100.00%
GM	91.67%	78.26%	95.24%	90.48%	100.00%	90.91%
<b>Average</b>	<b>95.83%</b>	<b>92.75%</b>	<b>98.41%</b>	<b>96.83%</b>	<b>100.00%</b>	<b>95.45%</b>

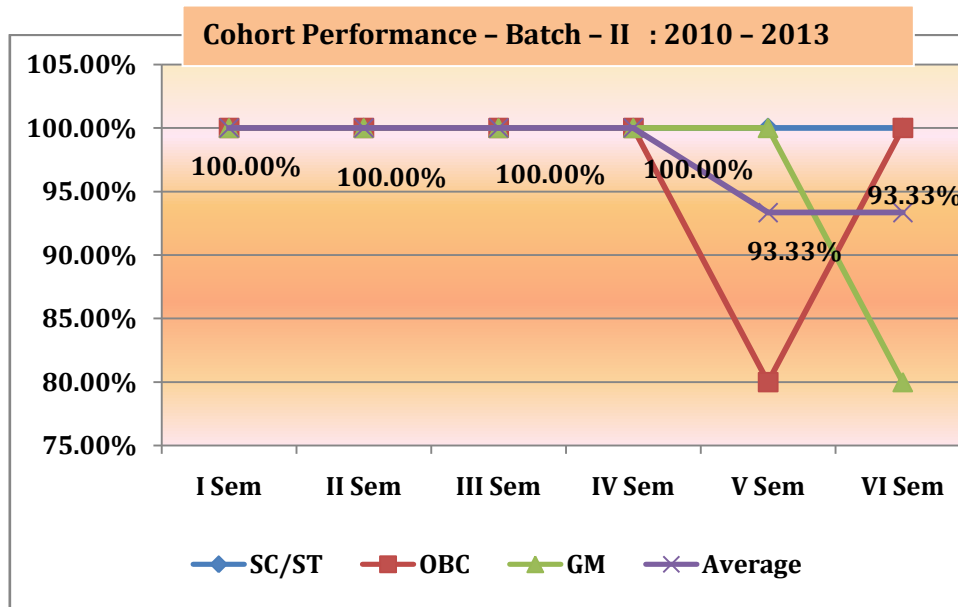
**Cohort Performance - Batch - I : 2009 - 2012**





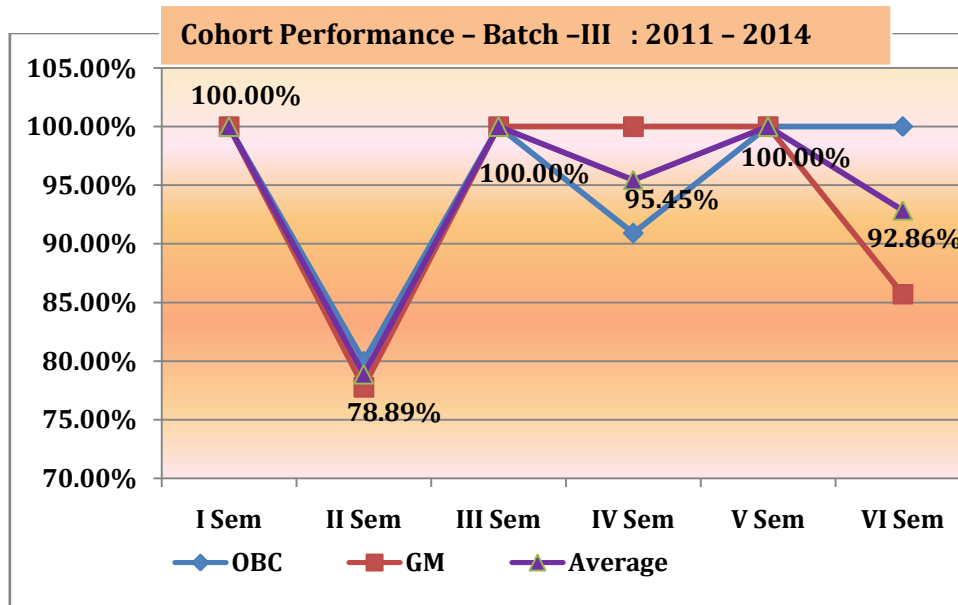
**Batch - II : 2010 - 13**

Category	I Sem	II Sem	III Sem	IV Sem	V Sem	VI Sem
SC/ST	100.00%	100.00%	100.00%	100.00%	100.00%	100.00%
OBC	100.00%	100.00%	100.00%	100.00%	80.00%	100.00%
GM	100.00%	100.00%	100.00%	100.00%	100.00%	80.00%
<b>Average</b>	<b>100.00%</b>	<b>100.00%</b>	<b>100.00%</b>	<b>100.00%</b>	<b>93.33%</b>	<b>93.33%</b>



**Batch - III : 2011 - 14**

Category	I Sem	II Sem	III Sem	IV Sem	V Sem	VI Sem
SC/ST	NA	NA	NA	NA	NA	NA
OBC	100.00%	80.00%	100.00%	90.91%	100.00%	100.00%
GM	100.00%	77.78%	100.00%	100.00%	100.00%	85.71%
<b>Average</b>	<b>100.00%</b>	<b>78.89%</b>	<b>100.00%</b>	<b>95.45%</b>	<b>100.00%</b>	<b>92.86%</b>



### 35. SWOC analysis of the department and Future plans

#### Strengths

- Good co-ordination and good understanding among colleagues
- Good performance of students in university examinations.
- Enthusiasm in exploring and generating papers about research work
- Motivating students to publish research articles in both national and international journals.
- Taking right opinions by interaction with other department colleagues

#### Weaknesses

- Lack of time to execute the plan of action because of semester scheme.
- Lack of information or awareness about subject related camps. (summer research camp)

#### Opportunity

- Taking active role in health care systems

#### Future plan

- Furnishing the department with modernized equipment
- Acquiring ICT tools for class room teaching as well as in the laboratory
- Clinical tie up with reputed hospitals (for both students and faculty).

\*\*\*\*\*