



## DEPARTMENT OF ENGLISH

1.	Name of the department	ENGLISH
2.	Year of Establishment	1945
3.	Names of Programmes / Courses offered (UG, PG, M.Phil., Ph.D., Integrated Masters; Integrated Ph.D., etc.)	B.Sc. B.Com. BCA BBM
4.	Names of Interdisciplinary courses and the departments/units involved	NIL
5.	Annual/ semester/choice based credit system (programme wise)	Semester System : Prior to 2014 - 15 Choice Based Credit system: 2014 - 15 onwards
6.	Participation of the department in the courses offered by other departments	NIL
7.	Courses in collaboration with other universities, industries, foreign institutions, etc.	NIL
8.	Details of courses/programmes discontinued (if any) with reasons	NIL
9.	<b>Number of teaching posts</b>	
	<b>Designation</b>	<b>Sanctioned</b>
	Professors	NIL
	Associate Professors	2
	Asst. Professors	2



10. Faculty profile with name, qualification, designation, specialization, (D.Sc./D.Litt. /Ph.D. / M. Phil. etc.,)

Name	Qualification	Designation	Specialization
T.K.Sathyannarayana Murthy	M.A., M.Phil.	Associate Professor	Linguistics(ELT)
B.S.Jayashree	M.A., Ph.D.	Associate Prof	
C. Sreenivasan	M.A., B.Ed. M.Phil.	Assistant Prof	Selected Plays of Arthur Miller: A Comparative Study
K. J. Jayashree	M.A	Assistant Prof	

11.	List of senior visiting faculty	NIL	
12.	Percentage of lectures delivered and practical classes handled (programme wise) by temporary faculty	NIL	
13.	Student -Teacher Ratio (programme wise)	B.Sc.	158 : 1
		B.Com.	195 : 1
		BCA	33 : 1
		BBM	32 : 1
		TOTAL	418 : 1
14.	Number of academic support staff	<b>Sanctioned</b>	<b>Filled</b>
		01	01
15.	Qualifications of teaching faculty with D Sc/ D.Litt. / Ph.D. / MPhil / PG	Ph.D	01
		M.Phil.	02
		PG	01
16.	Number of faculty with ongoing projects from	NIL	
	National Funding Agency	NIL	
	International Funding Agency	NIL	
17.	Departmental projects funded by DST - FIST; UGC, DBT, ICSSR, etc. and total grants received.	NIL	



18.	Research Centre /facility recognized by the University	NIL
19.	Publications	NIL
	Publication per faculty	0
	Number of papers published in peer reviewed journals	0
	National Journals	00
	International Journals	00
	Books Edited	NIL
	Books Edited with ISBN Numbers	NIL
	Impact factor	NIL
	h - index	NIL
20.	Areas of consultancy and income generated	NIL
21.	Faculty as members in	
	a. National Committees	NIL
	b. International Committees	NIL
	c. Editorial Boards	NIL
22.	Student projects	



	a) Percentage of students who have done in-house projects including inter departmental/programme	NIL
	b) Percentage of students placed for projects in organizations outside the institution i.e.in Research laboratories/Industry/ other agencies	NIL
23.	Awards and Recognitions received by faculty and students	NIL

### I. Dr. B S Jayashree

#### a. As Panelist

Organized by	Topic of panel discussion	Date	Chaired by
Times of India, Bangalore	'Women's safety'	28 September 2013	Commissioner of Police, Bangalore
Press Club of India, Bangalore	'Woman, the entrepreneur - a success story'	12 <sup>th</sup> January 2014	

#### b. As Resource Person

Organized by	Rotary Inner Wheel, Bangalore
Topic	Connect between the producer and the consumer
Delivered Lecture on	Prosumerism
Date	March 2012

### II. Prof. T K Sathyanarayana Murthy

#### a. As a resource Person

Organized by	Topic	Event	Date	Target Audience
Govt. First Grade College, HSR Layout	Review on the Work Books prescribed for 1st & 3rd semesters by BU	One day Workshop on "Teaching English at BU"	March 2011	Teachers and students
BTL 1st grade College, Hosur Road, Bangalore	How to use the texts prescribed by BU to teach English communicatively	One day Workshop	March 2012	Teachers of affiliated colleges



Organized by	Topic	Event	Date	Target Audience
PES Junior College, Hanumanth Nagar, Bangalore	Indian Education System - pros and cons	One day Workshop	February 2013	Students & Teachers of affiliated colleges

- b. Worked as Chief Editor of "VIJAYA" , our college annual magazine for two consecutive years, 2010-11 & 2011-12

**c. Resource person for Hindusthani Music**

Organized by	Sparrows Montessori School, Kundanahalli, White Field Road, Bangalore
Topic	Hindustani Classical Music for Kids
Target Audience	Children
Date	January 2011, 2012, 2013
Training Given	Singing Patriotic Songs by Children

**d. Resource person for Hindusthani Music**

Gave lecture demonstrations on "The taal and raag paddhati" in Hindustani Music System at Suchinth's Music Academy, Bangalore during the years 2012 , 2013 and 2014

24.	List of Eminent academicians and scientists / Visitors to the department	NIL
25.	Seminars/ Conferences/Workshops organized & the source of funding National International	NIL



### Seminars / Conferences Attended

Name of the Faculty	Title of the Conference	Date	Organized by	Topic of paper presented
<b>Dr. B S Jayashree</b>	Hindu World Women Conference	29 December 2012	Bangalore	"Contribution and Challenges of Women as sole bread earners" The panel was chaired by Smt.Nirmala Sitaraman, the present union minister for commerce
<b>Prof. C Sreenivasan</b>	Workshop on "Critical Review of Third Semester English Texts"	14th July 2012	Al-Ameen Arts, Science & Commerce College, Bangalore	Participated
<b>Prof. C Sreenivasan</b>	"New Frontiers of Literary Research"	11-12 November 2010	Seminar hall, Central College, Bangalore University	Participated
<b>Prof. C Sreenivasan</b>	Seminar on "Beyond Tagore"	December 2010	Seshadripuram College, Bangalore	Participated
<b>Dr. B S Jayashree</b>	Seminar at Dhvanyaloka institute for commonwealth literature and indigenous arts	November 2011		'Recent trends in translations'
<b>Dr. B S Jayashree</b>	Dhvanyaloka institute of common wealth	October 2014		Participated



Name of the Faculty	Title of the Conference	Date	Organized by	Topic of paper presented
	literature and indigenous arts Mysore Occassion : 450th anniversary of William Shakespeare			
<b>Dr. B S Jayashree</b>	Seminar at Dhvanyaloka institute for commonwealth literature and indigenous arts	October 2010		Presented translated story titled 'When Wombs Chirped', a story written by the noted Kannada writer Suneeti Krishnaswamy

### Prof. T K Sathyanarayana Murthy's publications on Music

- The Influence of Music on the Inner World
- Music in the Competitive World
- Sangeet and Ras
- Effect of music on plant life - some scientific findings(from 2010 till date)

### 26. Student profile programme/course wise

Year	Name of the Course / Programme	Applications Received	Selected	Enrolled in I Year		TOTAL All Years	Pass Percentage (outgoing students)
				Male	Female		
2010 - 11	B.Sc.	361	361	197	164	781	95.00%
	B.Com.	1793	316	172	144	617	93.77%
	BCA	138	48	23	25	84	100.00%
	BBM	251	54	31	23	105	96.22%
	<b>Grand Total</b>	<b>2625</b>	<b>779</b>	<b>423</b>	<b>356</b>	<b>1587</b>	<b>96.25%</b>



Year	Name of the Course / Programme	Applications Received	Selected	Enrolled in I Year		TOTAL All Years	Pass Percentage (outgoing students)
				Male	Female		
2011 - 12	B.Sc.	247	247	110	137	614	86.59%
	B.Com.	1665	304	166	138	620	98.33%
	BCA	225	51	25	26	99	95.83%
	BBM	190	49	27	22	49	100.00%
	<b>Grand Total</b>	<b>2354</b>	<b>651</b>	<b>328</b>	<b>323</b>	<b>1382</b>	<b>95.19%</b>
2012 - 13	B.Sc.	247	247	141	106	520	95.17%
	B.Com.	1758	355	177	178	650	96.10%
	BCA	212	37	23	14	88	92.00%
	BBM	174	39	27	12	39	89.19%
	<b>Grand Total</b>	<b>2435</b>	<b>678</b>	<b>368</b>	<b>310</b>	<b>1297</b>	<b>93.12%</b>
2013 - 14	B.Sc.	349	349	178	171	623	97.47%
	B.Com.	1630	400	195	205	732	97.35%
	BCA	190	66	29	37	101	97.06%
	BBM	124	68	43	25	68	94.87%
	<b>Grand Total</b>	<b>2329</b>	<b>883</b>	<b>445</b>	<b>438</b>	<b>1524</b>	<b>96.69%</b>
2014 - 15	B.Sc.	307	307	141	166	656	
	B.Com.	1663	380	190	190	775	
	BCA	207	64	32	32	131	
	BBM	196	63	42	21	128	
	<b>Grand Total</b>	<b>2373</b>	<b>814</b>	<b>405</b>	<b>409</b>	<b>1690</b>	





## 27. Diversity of Students

Name of the Course	% of students from the same state	% of students from other States	% of students from abroad
B.Sc.	100%	NIL	NIL
B.Com.	100%	NIL	NIL
BCA	100%	NIL	NIL
BBM	100%	NIL	NIL

28. How many students have cleared national and state competitive examinations such as NET, SLET, GATE, Civil services, Defence services, etc.?

NIL

## 29. Student progression

Student progression	Against % enrolled
UG to PG	NA
PG to M.Phil.	NA
PG to Ph.D.	NA
Ph.D. to Post-Doctoral	NA
Employed • Campus selection • Other than campus recruitment	Consolidated data presented in the student support services
Entrepreneurship/Self-employment	No Data Available

30.	Details of Infrastructural facilities	
a.	LIBRARY	
	<b>Books</b> Main Library	5721 Books
	Department Library <b>(Late Swarnalatha Memorial Library)</b>	300 Books



b.	Internet facilities for Staff & Students	Available
c.	Class rooms with ICT facility	07 Class rooms and Language Laboratory
d.	Laboratories	01
	Area of the Laboratories	900 sq.ft. Shared with Biotechnology
	English Language Lab equipped with 18 Core i3 computers, head phone sets, multimedia speaker set, LCD projector with internet	

31.	Number of students receiving financial assistance from college, university, Government or other agencies	Data furnished under student support services
32.	<b>Details of Student Enrichment Programmes</b>	
	Guest Lectures are organized periodically	

33. Teaching methods adopted to improve student learning :

- Conventional chalk and talk method
- ICT in the English Language Lab
- Role plays
- Communication Skill enhancements through assignments, seminars and group discussions

34. Participation in Institutional Social Responsibility (ISR) and Extension activities:

- Participation in environmental awareness programmes
- Participation in national festivals
- Dr. B.S. Jayashree is the Chairperson of Women Empowerment Cell
- Dr. B.S. Jayashree held student counselling programmes at Shantidaama Gurukula school , Kanakapura taluk an integrated

school for Vedic and school education , in the years 2009 , 2010, 2011. The school caters to the cause of education to the tribal children of the surrounding villages

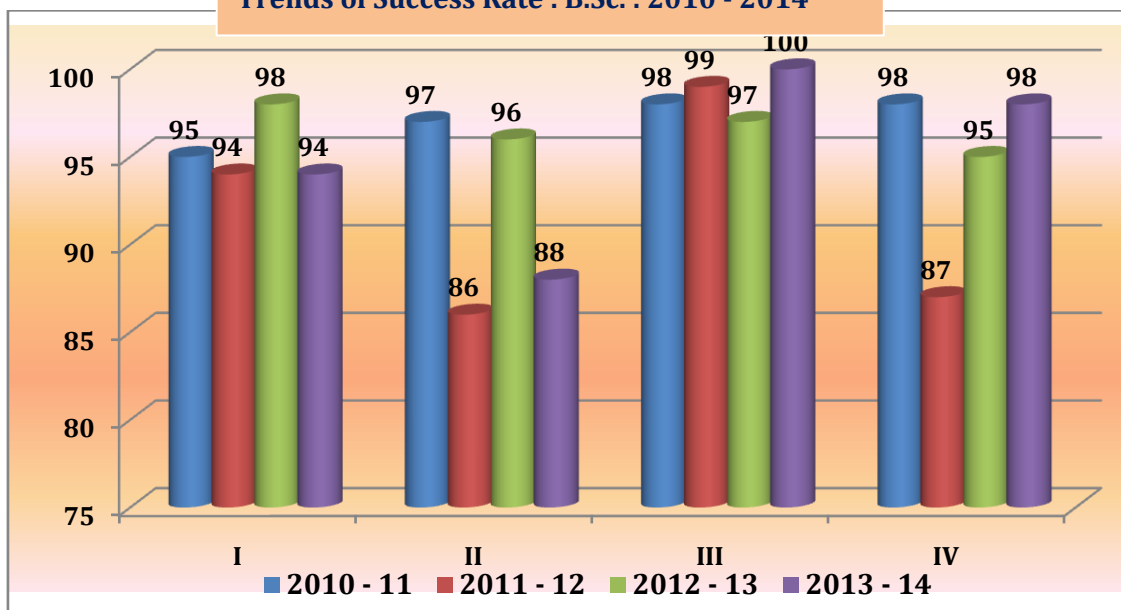
- Dr. B.S. Jayashree held workshop for students at Shantidaama, (an integrated school for vedic and school education) in teaching vocabulary; each child a bright child for he learns five words a day. An initiative taken to improve word power and the power of imagination.
- Dr. B.S. Jayashree spoke on importance of education for tribal children of the surrounding villages of Kanakapura Taluk on the theme "learning is fun"

### I. Trends in Success Rate of Students : 2010 - 2014

Stream : B.Sc.

Sem	2010 - 11	2011 - 12	2012 - 13	2013 - 14
I	95	94	98	94
II	97	86	96	88
III	98	99	97	100
IV	98	87	95	98

Trends of Success Rate : B.Sc. : 2010 - 2014

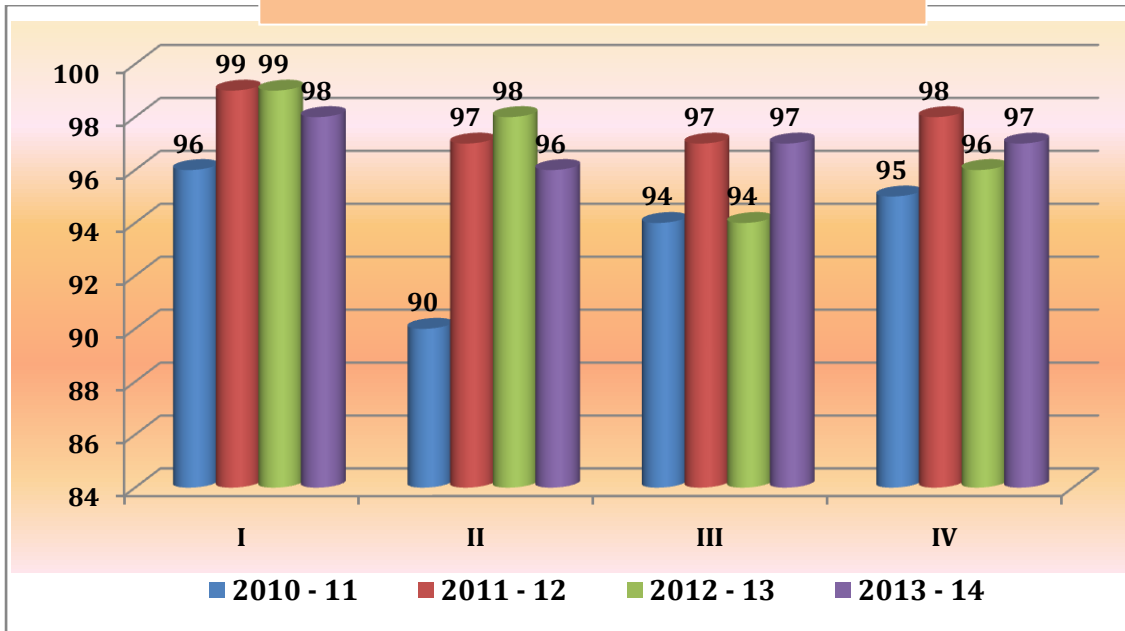




**Stream : B.Com.**

Sem	2010 - 11	2011 - 12	2012 - 13	2013 - 14
I	96	99	99	98
II	90	97	98	96
III	94	97	94	97
IV	95	98	96	97

**Trends of Success Rate : B.Com. : 2010 - 2014**

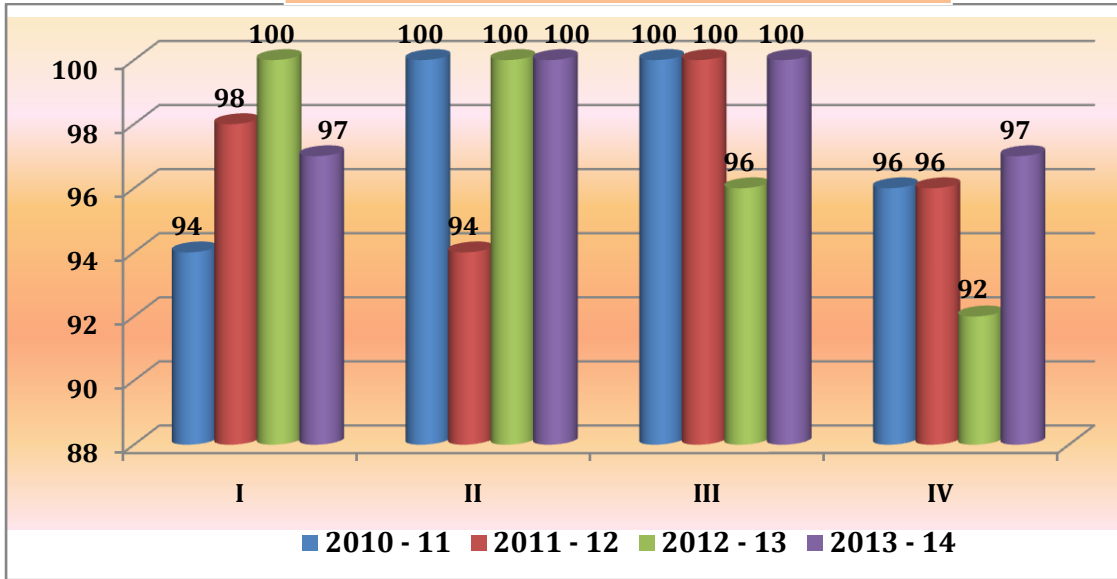


**Stream : BCA**

Sem	2010 - 11	2011 - 12	2012 - 13	2013 - 14
I	94	98	100	97
II	100	94	100	100
III	100	100	96	100
IV	96	96	92	97



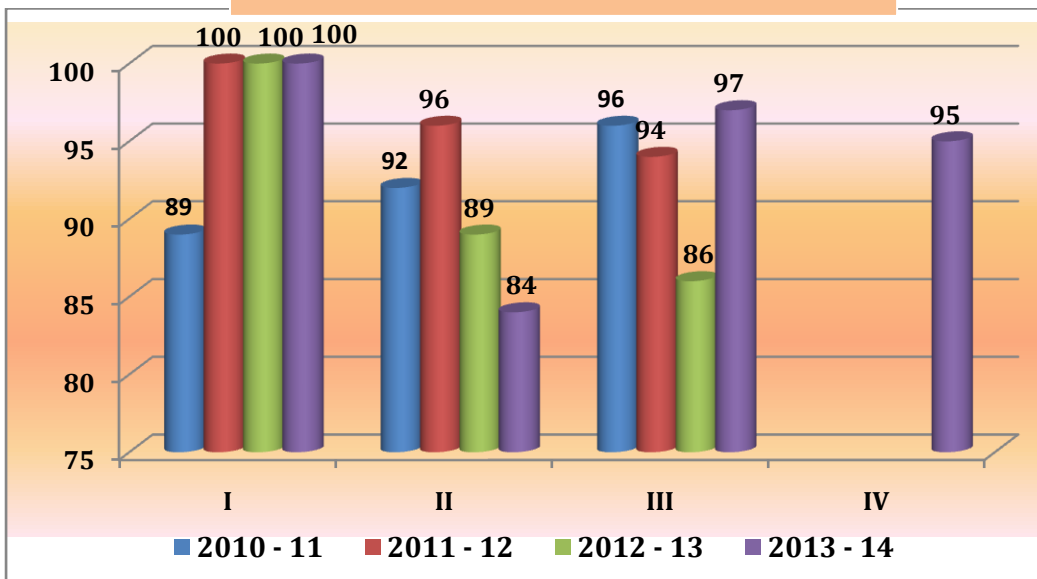
Trends of Success Rate : BCA : 2010 - 2014



Stream : BBM

Sem	2010 - 11	2011 - 12	2012 - 13	2013 - 14
I	89	100	100	100
II	92	96	89	84
III	96	94	86	97
IV	NA	NA	NA	95

Trends of Success Rate : BBM : 2010 - 2014



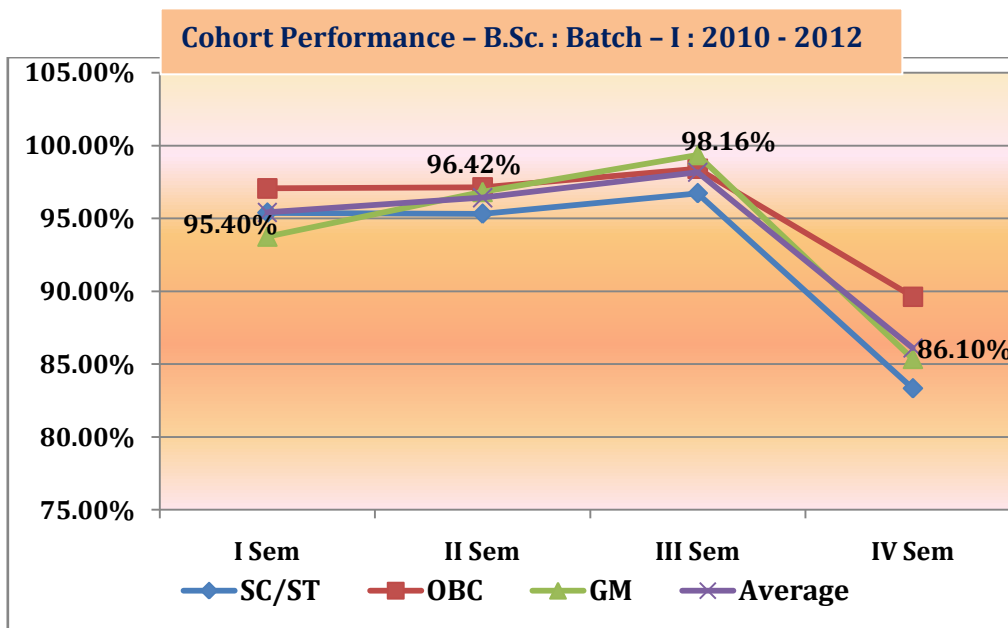


**II. Cohort Performance : 2009 - 2014**

**Stream : B.Sc.**

**Batch - I : 2010 - 12**

Category	I Sem	II Sem	III Sem	IV Sem
SC/ST	95.38%	95.31%	96.72%	83.33%
OBC	97.06%	97.12%	98.40%	89.63%
GM	93.75%	96.82%	99.35%	85.35%
<b>Average</b>	<b>95.40%</b>	<b>96.42%</b>	<b>98.16%</b>	<b>86.10%</b>

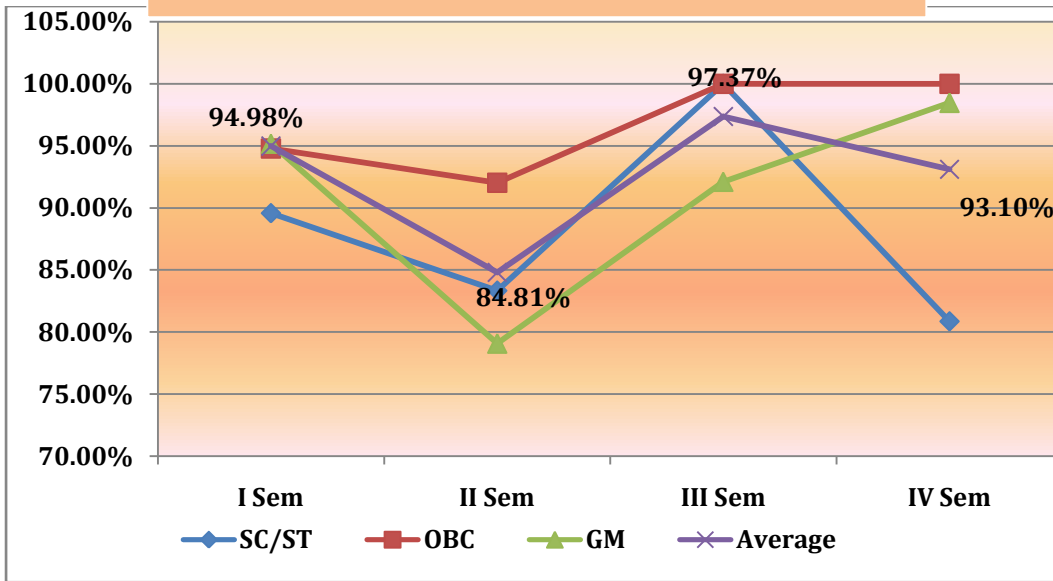


**Batch - II : 2011 - 13**

Category	I Sem	II Sem	III Sem	IV Sem
SC/ST	89.58%	83.33%	100.00%	80.85%
OBC	94.78%	92.04%	100.00%	100.00%
GM	95.18%	79.07%	92.11%	98.46%
<b>Average</b>	<b>94.98%</b>	<b>84.81%</b>	<b>97.37%</b>	<b>93.10%</b>



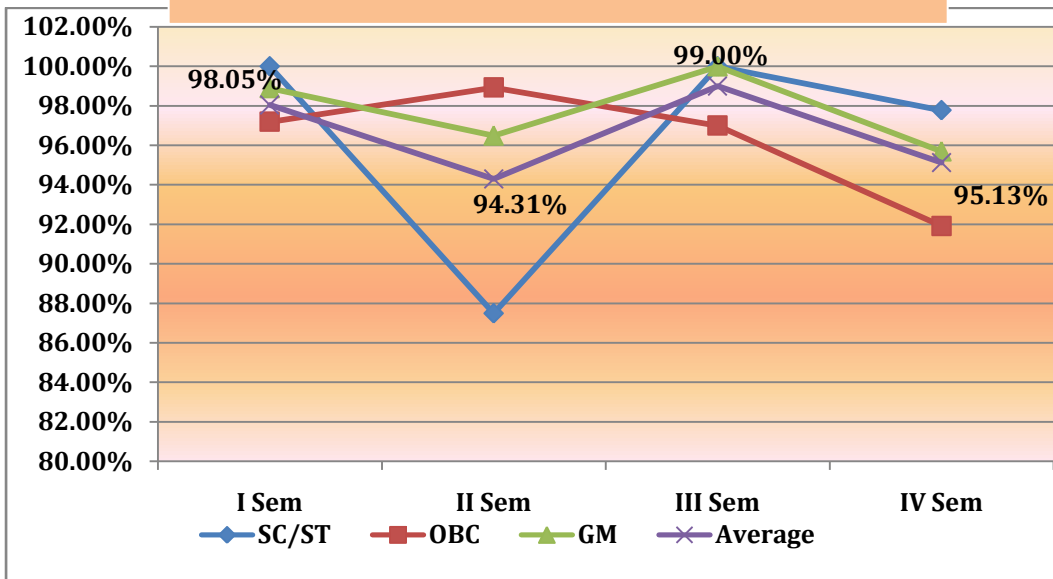
**Cohort Performance - B.Sc. : Batch -II : 2011 - 2013**



**Batch - III : 2012 - 14**

Category	I Sem	II Sem	III Sem	IV Sem
SC/ST	100.00%	87.50%	100.00%	97.78%
OBC	97.20%	98.93%	97.00%	91.92%
GM	98.90%	96.50%	100.00%	95.70%
<b>Average</b>	<b>98.05%</b>	<b>94.31%</b>	<b>99.00%</b>	<b>95.13%</b>

**Cohort Performance - B.Sc. : Batch -III : 2012 - 2014**



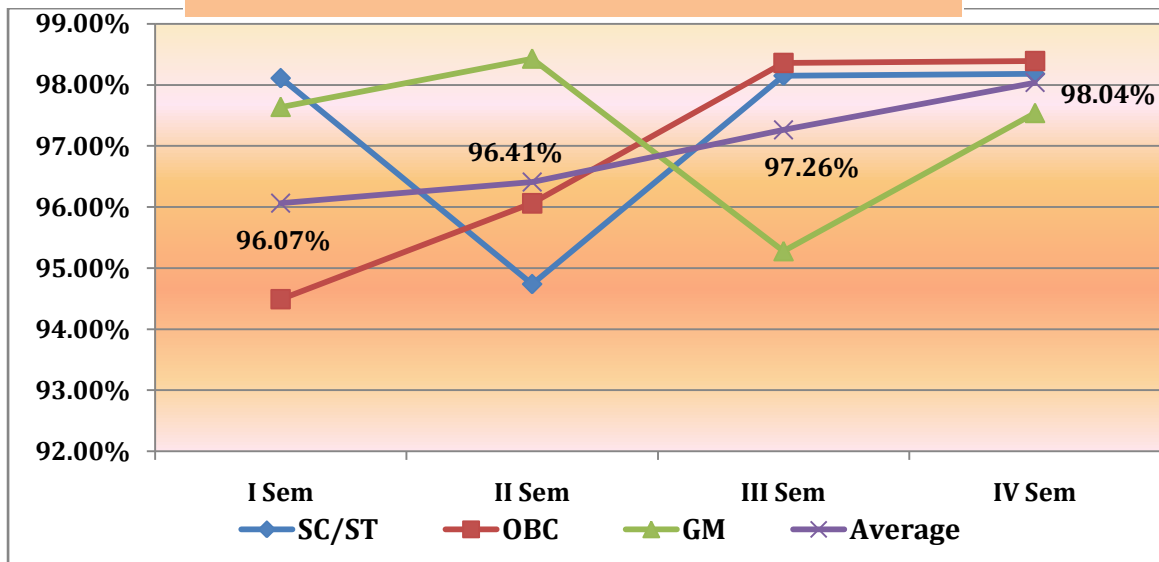


Stream : B.Com.

**Batch - I : 2010 - 12**

Category	I Sem	II Sem	III Sem	IV Sem
SC/ST	98.11%	94.74%	98.15%	98.18%
OBC	94.49%	96.06%	98.36%	98.39%
GM	97.64%	98.43%	95.28%	97.54%
<b>Average</b>	<b>96.07%</b>	<b>96.41%</b>	<b>97.26%</b>	<b>98.04%</b>

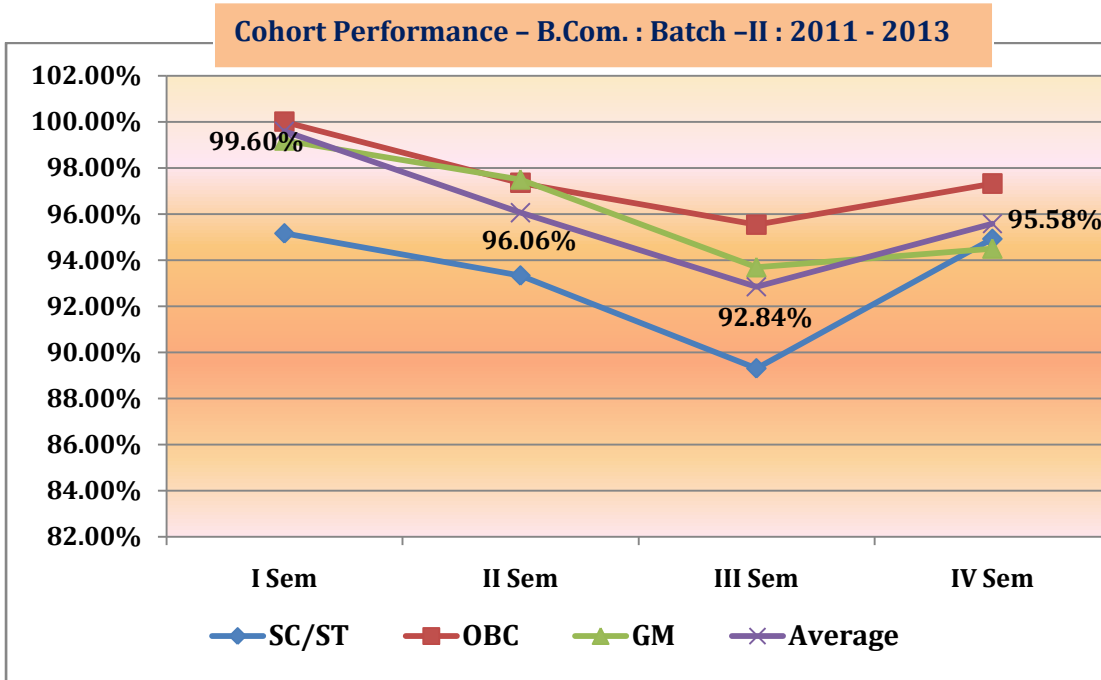
**Cohort Performance - B.Com. : Batch -I : 2010 - 2012**



**Batch - II : 2011 - 13**

Category	I Sem	II Sem	III Sem	IV Sem
SC/ST	95.16%	93.33%	89.30%	94.92%
OBC	100.00%	97.35%	95.54%	97.32%
GM	99.19%	97.50%	93.69%	94.50%
<b>Average</b>	<b>99.60%</b>	<b>96.06%</b>	<b>92.84%</b>	<b>95.58%</b>



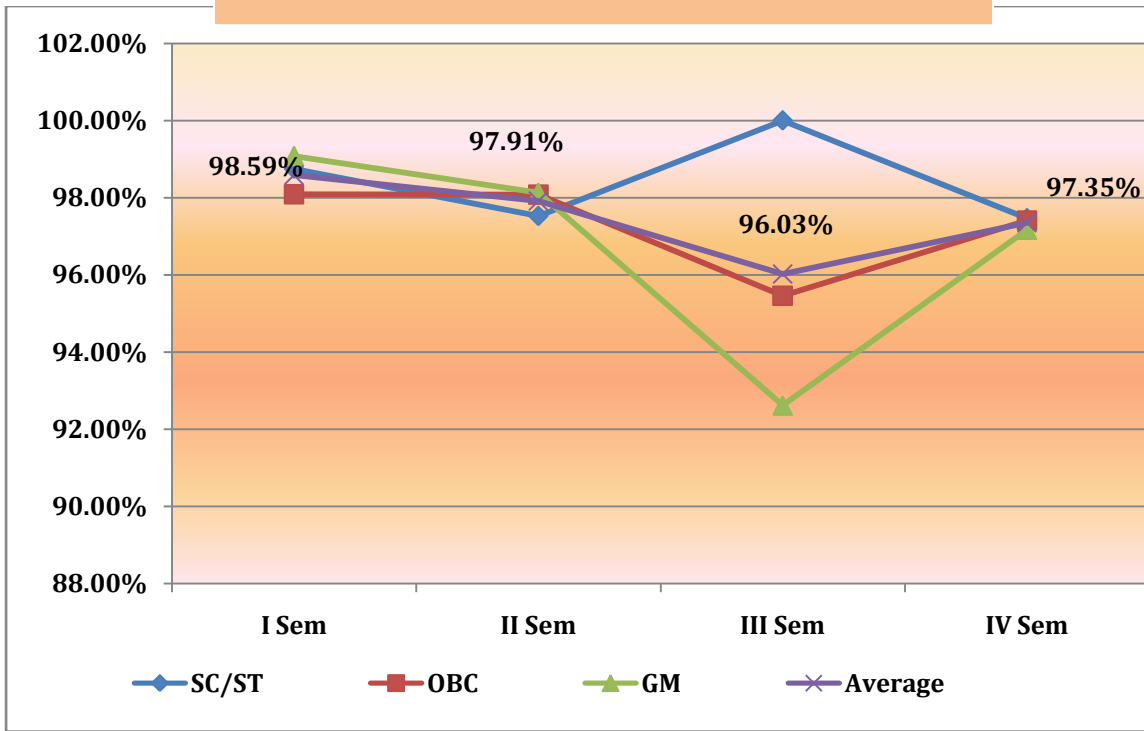


**Batch - III : 2012 - 14**

Category	I Sem	II Sem	III Sem	IV Sem
SC/ST	98.75%	97.53%	100.00%	97.47%
OBC	98.09%	98.08%	95.46%	97.41%
GM	99.08%	98.13%	92.62%	97.17%
<b>Average</b>	<b>98.59%</b>	<b>97.91%</b>	<b>96.03%</b>	<b>97.35%</b>



**Cohort Performance - B.Com. : Batch -III : 2012 - 2014**

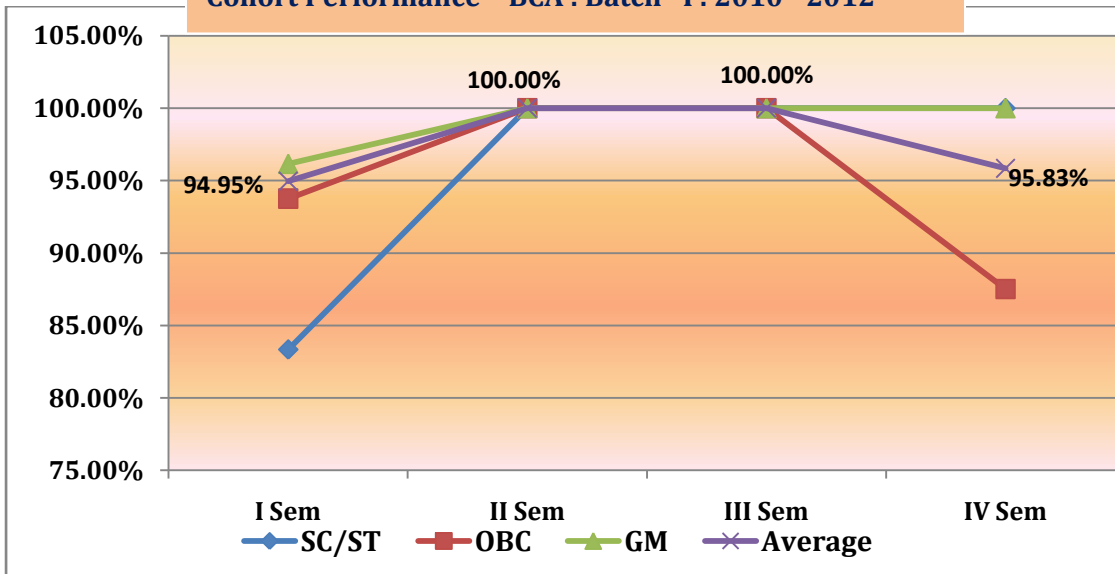


Stream : BCA

**Batch - I : 2010 - 12**

Category	I Sem	II Sem	III Sem	IV Sem
SC/ST	83.33%	100.00%	100.00%	100.00%
OBC	93.75%	100.00%	100.00%	87.50%
GM	96.15%	100.00%	100.00%	100.00%
<b>Average</b>	<b>94.95%</b>	<b>100.00%</b>	<b>100.00%</b>	<b>95.83%</b>

**Cohort Performance - BCA : Batch -I : 2010 - 2012**

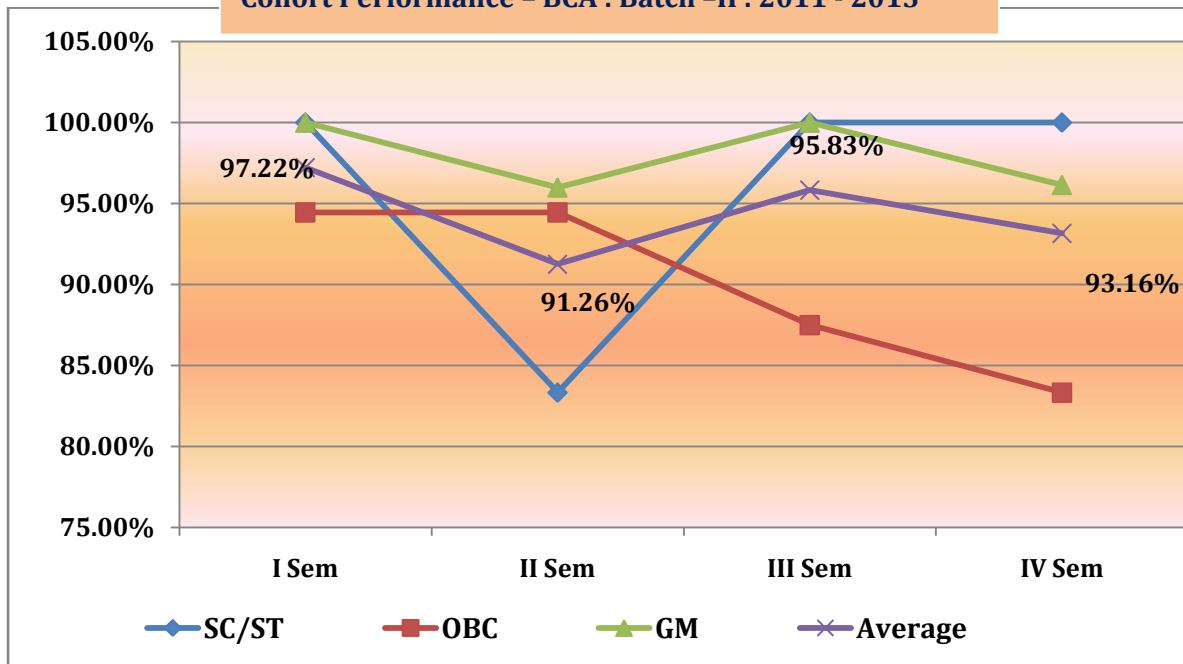




**Batch - II : 2011 - 13**

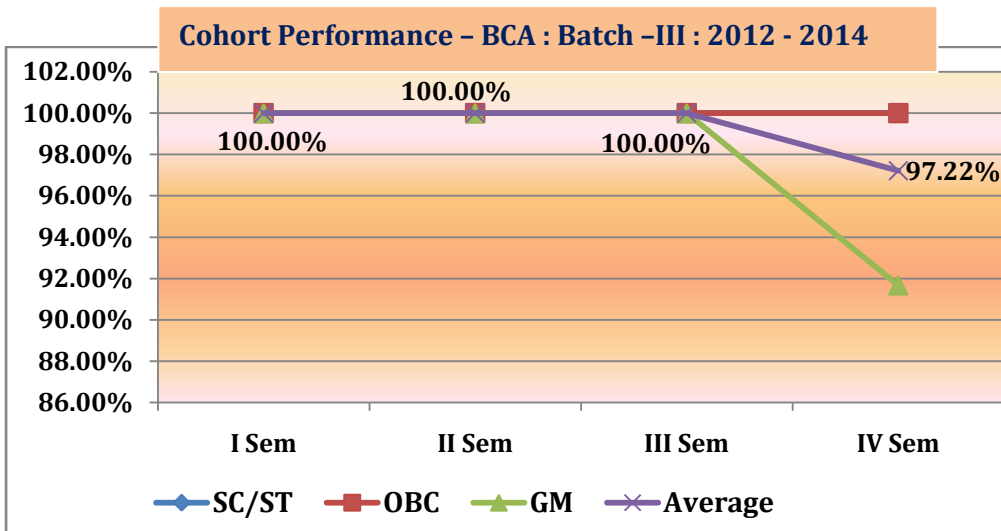
Category	I Sem	II Sem	III Sem	IV Sem
SC/ST	100.00%	83.33%	100.00%	100.00%
OBC	94.44%	94.44%	87.50%	83.33%
GM	100.00%	96.00%	100.00%	96.15%
<b>Average</b>	<b>97.22%</b>	<b>91.26%</b>	<b>95.83%</b>	<b>93.16%</b>

**Cohort Performance - BCA : Batch -II : 2011 - 2013**



**Batch - III : 2012 - 14**

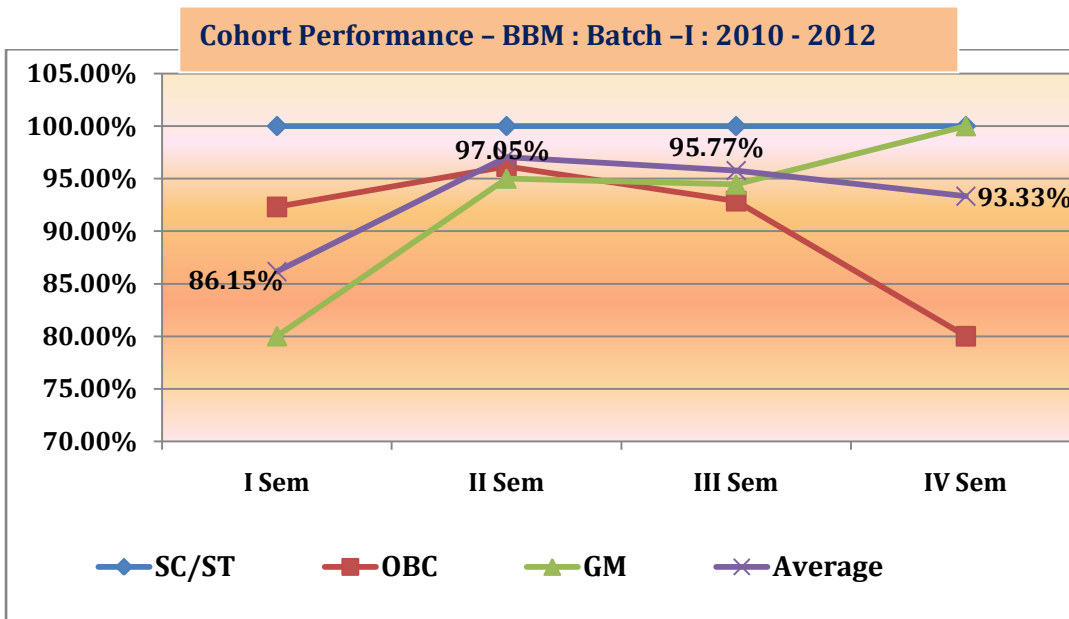
Category	I Sem	II Sem	III Sem	IV Sem
SC/ST	100.00%	100.00%	100.00%	100.00%
OBC	100.00%	100.00%	100.00%	100.00%
GM	100.00%	100.00%	100.00%	91.67%
<b>Average</b>	<b>100.00%</b>	<b>100.00%</b>	<b>100.00%</b>	<b>97.22%</b>



Stream : BBM

**Batch - I : 2010 - 12**

Category	I Sem	II Sem	III Sem	IV Sem
SC/ST	100.00%	100.00%	100.00%	100.00%
OBC	92.31%	96.15%	92.86%	80.00%
GM	80.00%	95.00%	94.44%	100.00%
<b>Average</b>	<b>86.15%</b>	<b>97.05%</b>	<b>95.77%</b>	<b>93.33%</b>

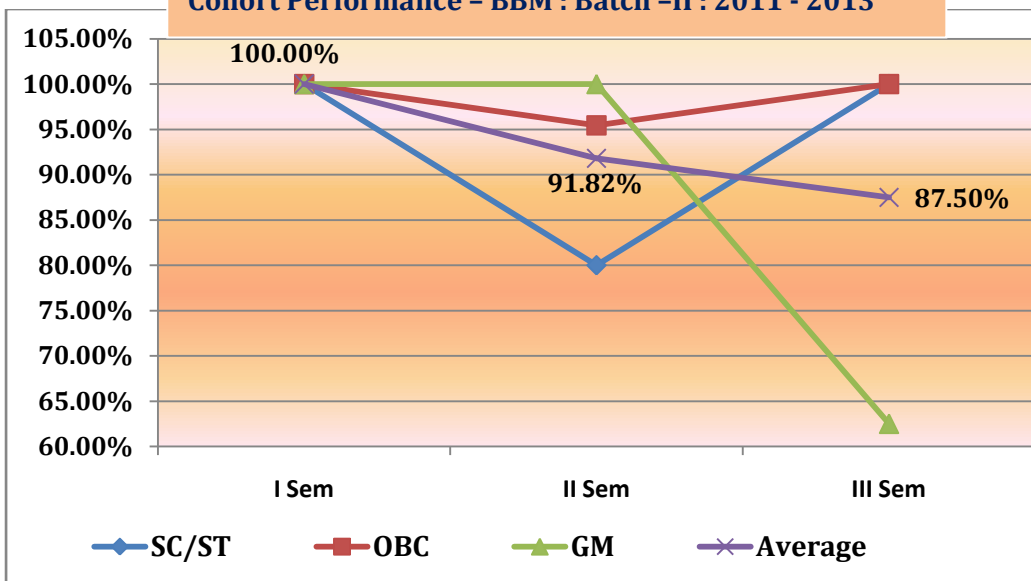




**Batch - II : 2011 - 13**

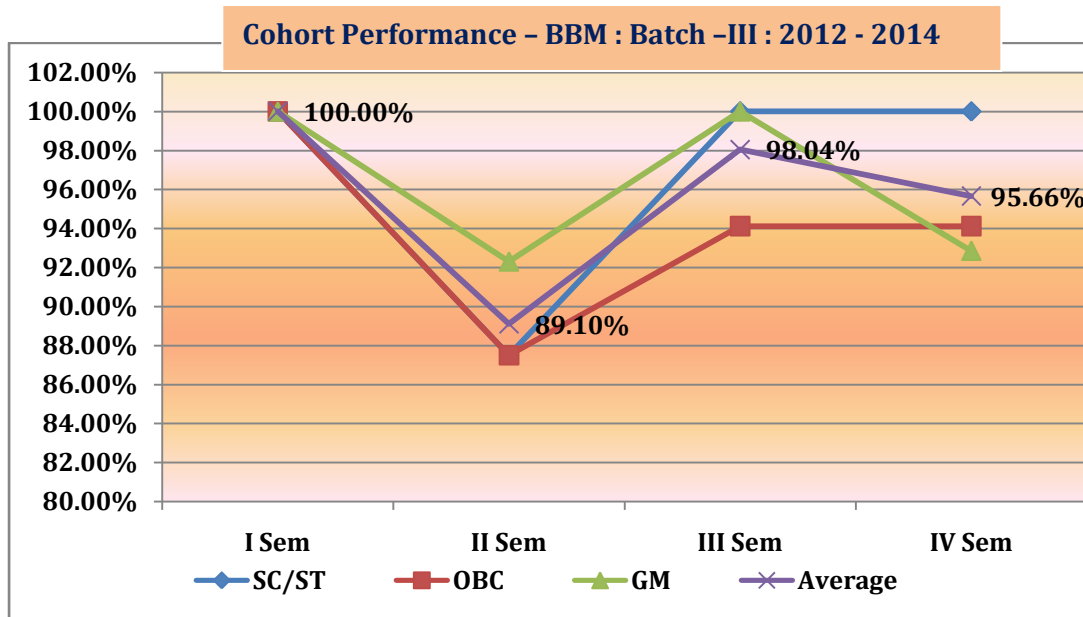
Category	I Sem	II Sem	III Sem
SC/ST	100.00%	80.00%	100.00%
OBC	100.00%	95.45%	100.00%
GM	100.00%	100.00%	62.50%
<b>Average</b>	<b>100.00%</b>	<b>91.82%</b>	<b>87.50%</b>

**Cohort Performance - BBM : Batch -II : 2011 - 2013**



**Batch - III : 2012 - 14**

Category	I Sem	II Sem	III Sem	IV Sem
SC/ST	100.00%	87.50%	100.00%	100.00%
OBC	100.00%	87.50%	94.12%	94.12%
GM	100.00%	92.31%	100.00%	92.86%
<b>Average</b>	<b>100.00%</b>	<b>89.10%</b>	<b>98.04%</b>	<b>95.66%</b>



### 35. SWOC analysis of the department and Future plans

#### Strengths:

- Sound academic traditions in the department bequeathed by doyens of yester year.
- Highly motivated and dedicated teaching staff
- Keen awareness of the changes and developments in the academic scenario and willingness to adapt to the same.
- Responsive to integrating technology in teaching; the language lab
- Well-equipped department library with over 300 volumes on wide-ranging themes

#### Weaknesses

- The abnormal and unwieldy teacher-student ratio
- Non-availability of text-books on time
- Inadequacy of student outreach activities

#### Opportunities

- Students can be involved in human rights activities and personality development programmes
- Using the Language Lab and AV equipment to diversify learning opportunities
- Starting a theatre club to promote student talent

- More journals could be procured
- Start an e – magazine to promote critical thinking skills on contemporary political, social, economic and education issues at the same time improving vocabulary and grammar through this medium

### Challenges

- Overcoming apathy towards learning of English and making them realize its importance as a life skill
- Creating a taste among students for reading in a situation where the visual media has been distracting their attention from the printed world
- Making teaching meaningful in a situation where the learning abilities of the students are too varied
- Addressing the needs of those debilitated by improper learning habits of English and boosting their confidence
- To sensitise the students to the rapid changes happening in the global scenario across diverse cultures

\*\*\*\*\*