



## DEPARTMENT OF ECONOMICS

1.	Name of the department	ECONOMICS	
2.	Year of Establishment	1970	
3.	Names of Programmes / Courses offered (UG, PG, M.Phil., Ph.D., Integrated Masters; Integrated Ph.D., etc.)	B.Sc. : MES	
4.	Names of Interdisciplinary courses and the departments/units involved	NIL	
5.	Annual/ semester/choice based credit system (programme wise)	Semester System : Prior to 2014 – 15 Choice Based Credit system: 2014 – 15 onwards	
6.	Participation of the department in the courses offered by other departments	NIL	
7.	Courses in collaboration with other universities, industries, foreign institutions, etc.	NIL	
8.	Details of courses/programmes discontinued (if any) with reasons	NIL	
9.	<b>Number of teaching posts</b>		
	<b>Designation</b>	<b>Sanctioned</b>	
	<b>Filled</b>		
	Professors	NIL	NIL
	Associate Professors	2	2
	Asst. Professors	NIL	NIL



10. Faculty profile with name, qualification, designation, specialization, (D.Sc./D.Litt. /Ph.D. / M. Phil. etc.,)

Name	Qualification	Designation	Specialization	No. of Years of Experience
S Nalinakshi	M.A,M.Phil, MBA	Associate Professor	Industrial Organization and Labour Economics	26
T Rukmini	M.A, M.Phil	Associate Professor		25

11.	List of senior visiting faculty	NIL	
12.	Percentage of lectures delivered and practical classes handled (programme wise) by temporary faculty	NIL	
13.	Student -Teacher Ratio (programme wise)	15 : 1	
14.	Number of academic support staff	<b>Sanctioned</b>	<b>Filled</b>
		NIL	NIL
15.	Qualifications of teaching faculty with D Sc/ D.Litt. / Ph.D. / MPhil / PG	M.Phil.	02
		PG	NIL
16.	Number of faculty with ongoing projects from	NIL	
	National Funding Agency	NIL	
	International Funding Agency	NIL	
17.	Departmental projects funded by DST - FIST; UGC, DBT, ICSSR, etc. and total grants received.	NIL	

18.	Research Centre /facility recognized by the University	NIL
19.	Publications	
	Publication per faculty	0
	Number of papers published in peer reviewed journals	NIL
	National Journals	00
	International Journals	00
	Books Edited	NIL
	Books Edited with ISBN Numbers	NIL
	Impact factor	NIL
	h - index	NIL

20.	Areas of consultancy and income generated	NIL
21.	Faculty as members in	
	a. National Committees	NIL
	b. International Committees	NIL
	c. Editorial Boards	NIL
22.	Student projects	

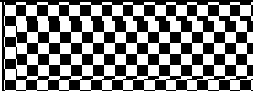


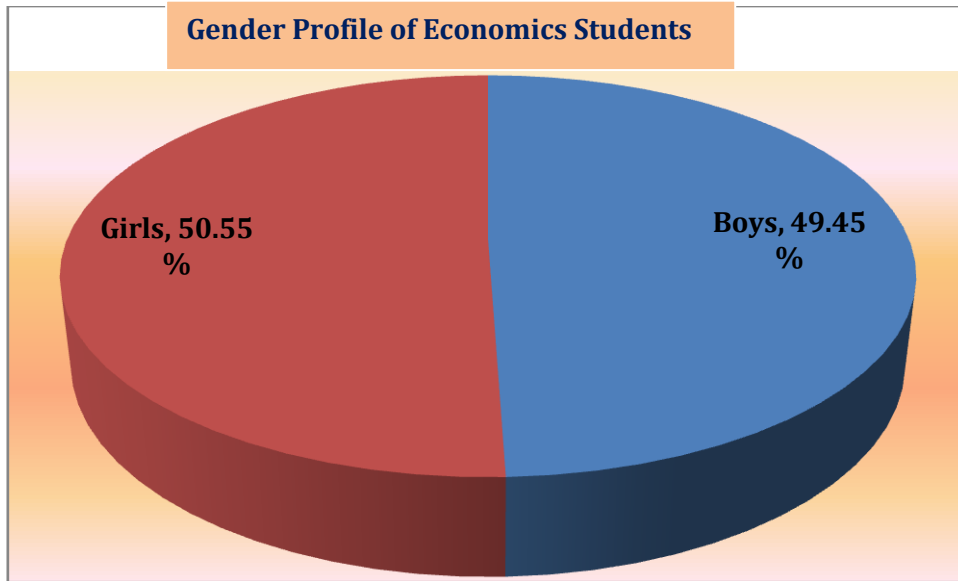
	a) Percentage of students who have done in-house projects including inter departmental/programme	NIL
	b) Percentage of students placed for projects in organizations outside the institution i.e.in Research laboratories/Industry/ other agencies	NIL
23.	Awards and Recognitions received by faculty and students	NIL
24.	List of eminent academicians and scientists / visitors to the department	NIL
25.	Seminars/ Conferences/Workshops organized & the source of funding National International	NIL

## 26. Student profile programme/course wise

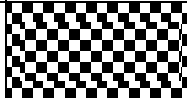
Year	Name of the Course / Programme	Applications Received	Selected	Enrolled in I Year		TOTAL All Years	Pass Percentage (outgoing students)
				Male	Female		
2010 - 11	B.Sc.	39	39	19	20	59	100.00%
2011 - 12		10	10	5	5	88	100.00%
2012 - 13		13	13	6	7	37	52.38%
2013 - 14		8	8	4	4	23	100.00%
2014 - 15		15	15	8	7	34	

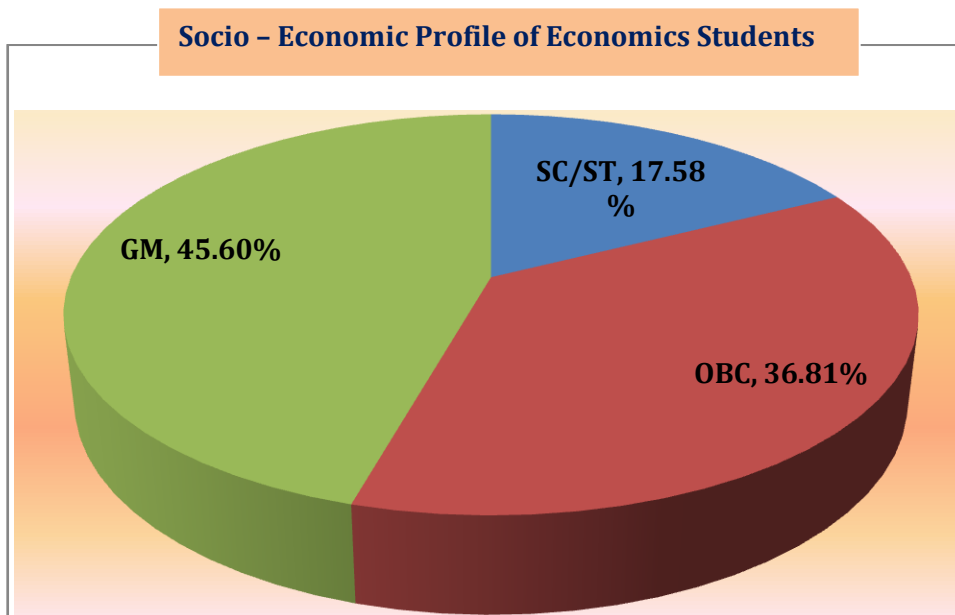
## Gender Profile of Students

Academic Year	Boys	Girls	Total
2011 - 12	43	45	88
2012 - 13	19	18	37
2013 - 14	11	12	23
2014 - 15	17	17	34
<b>Average Percentage</b>	<b>49.45%</b>	<b>50.55%</b>	



**Socio - economic profile of students**

Academic Year	SC/ST	OBC	GM	TOTAL
2011 - 12	11	31	46	88
2012 - 13	4	17	16	37
2013 - 14	5	8	10	23
2014 - 15	12	11	11	34
<b>Average Percentage</b>	<b>17.58%</b>	<b>36.81%</b>	<b>45.60%</b>	





## 27. Diversity of Students

Name of the Course	% of students from the same state	% of students from other States	% of students from abroad
B.Sc	100%	Nil	Nil

28. How many students have cleared national and state competitive examinations such as NET, SLET, GATE, Civil services, Defence services, etc. :

Information not available

## 29. Student progression

Student progression	Against % enrolled
UG to PG	No data Available
PG to M.Phil.	NA
PG to Ph.D.	NA
Ph.D. to Post-Doctoral	NA
<b>Employed</b>	No data Available
• Campus selection	
• Other than campus recruitment	No data
Entrepreneurship/Self-employment	NIL

30.	Details of Infrastructural facilities	
a.	LIBRARY	
	<b>Books</b> Main Library	2054 Books
	Departmental Library	75 Books



b.	Internet facilities for Staff & Students	Available
c.	Class rooms with ICT facility	Available
d.	Laboratories	NIL
31.	Number of students receiving financial assistance from college, university, Government or other agencies	Data furnished under student support services
32.	Details of Student Enrichment Programmes	<b>NIL</b>

33. Teaching methods adopted to improve student learning.

- Lecture method by using chalk and talk.
- Conducting class seminars and unit tests.
- Giving assignments to the students.
- Providing study materials and notes on special topics.
- Solving old university question papers.

34. Participation in Institutional Social Responsibility (ISR) and Extension activities:

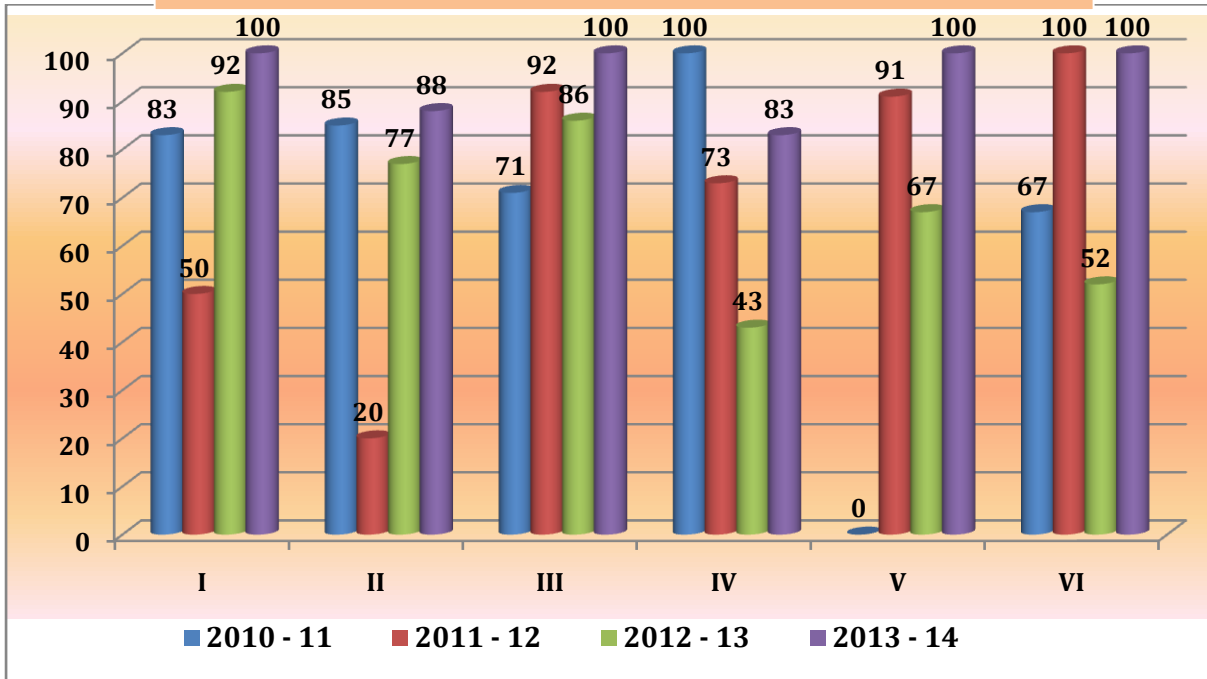
- Participation in Environment awareness programmes, gender sensitization programmes and programmes on condemning atrocities on women and oppressed classes
- Participation in National festivals
- Participation in NSS and NCC programmes

**I. Trends of Success Rate in Economics : 2010 - 2014**

Sem	2010 - 11	2011 - 12	2012 - 13	2013 - 14
<b>I</b>	83	50	92	100
<b>II</b>	85	20	77	88
<b>III</b>	71	92	86	100
<b>IV</b>	100	73	43	83
<b>V</b>	0	91	67	100
<b>VI</b>	67	100	52	100



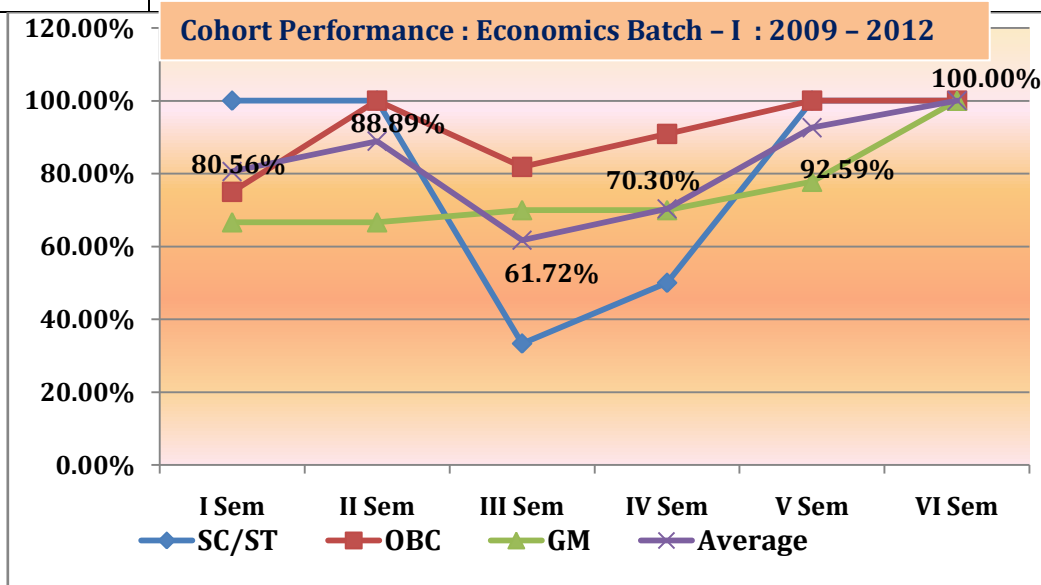
**Trends of Success Rate of Economics Students : 2010 - 2014**



**II. Cohort Performance of Economics Students : 2009 - 2014**

**Batch - I : 2009 - 12**

Category	I Sem	II Sem	III Sem	IV Sem	V Sem	VI Sem
SC/ST	100.00%	100.00%	33.33%	50.00%	100.00%	100.00%
OBC	75.00%	100.00%	81.82%	90.91%	100.00%	100.00%
GM	66.67%	66.67%	70.00%	70.00%	77.78%	100.00%
<b>Average</b>	<b>80.56%</b>	<b>88.89%</b>	<b>61.72%</b>	<b>70.30%</b>	<b>92.59%</b>	<b>100.00%</b>



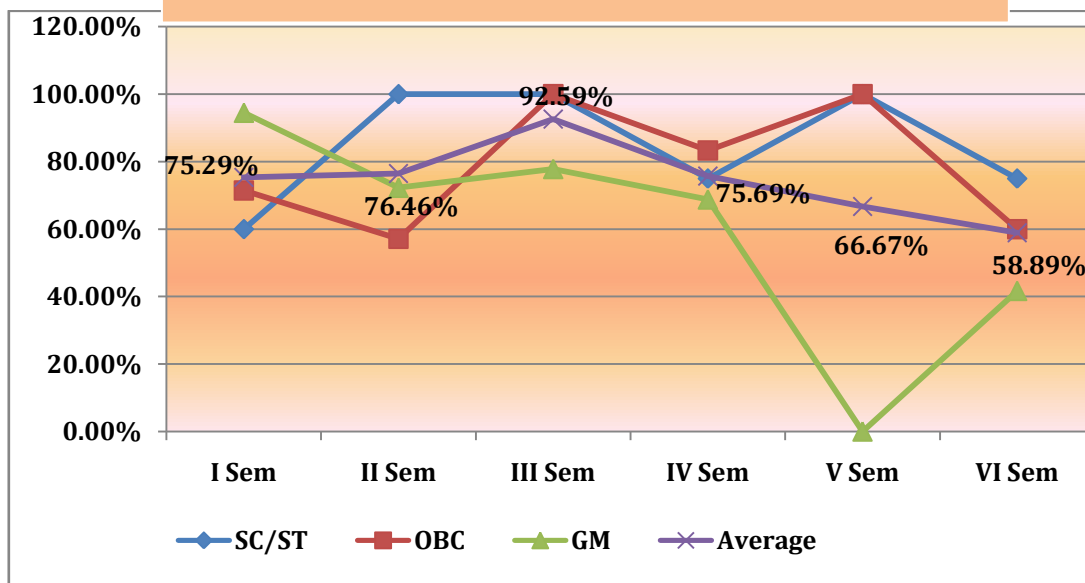




**Batch - II : 2010 - 13**

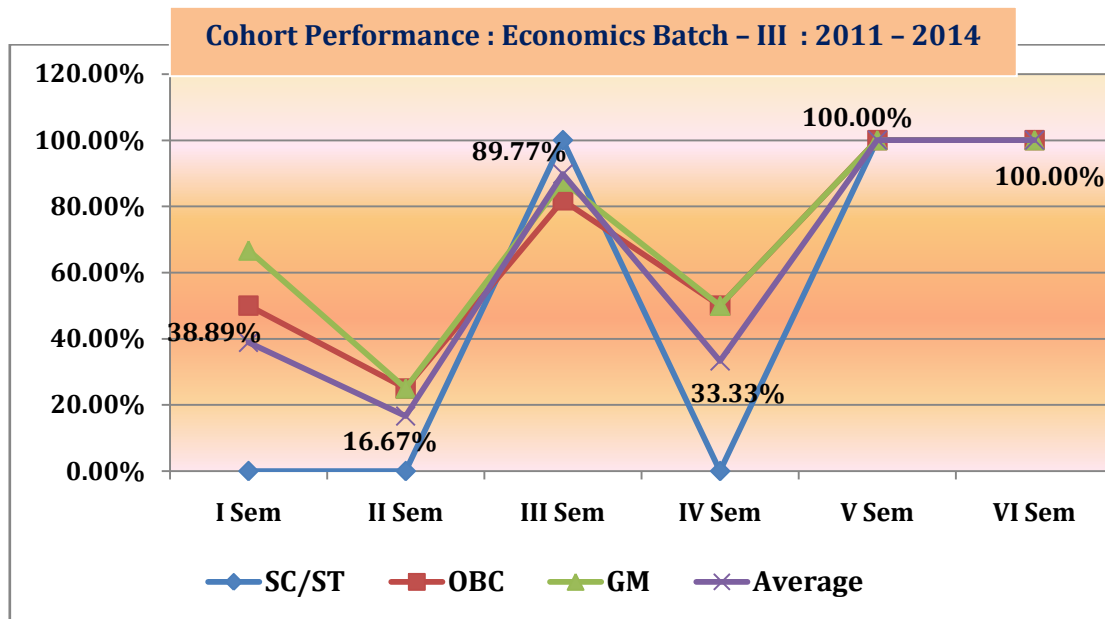
Category	I Sem	II Sem	III Sem	IV Sem	V Sem	VI Sem
SC/ST	60.00%	100.00%	100.00%	75.00%	100.00%	75.00%
OBC	71.43%	57.14%	100.00%	83.33%	100.00%	60.00%
GM	94.44%	72.22%	77.78%	68.75%	0.00%	41.67%
<b>Average</b>	<b>75.29%</b>	<b>76.46%</b>	<b>92.59%</b>	<b>75.69%</b>	<b>66.67%</b>	<b>58.89%</b>

**Cohort Performance : Economics Batch - II : 2010 - 2013**



**Batch - III : 2011 - 14**

Category	I Sem	II Sem	III Sem	IV Sem	V Sem	VI Sem
SC/ST	0.00%	0.00%	100.00%	0.00%	100.00%	100.00%
OBC	50.00%	25.00%	81.82%	50.00%	100.00%	100.00%
GM	66.67%	25.00%	87.50%	50.00%	100.00%	100.00%
<b>Average</b>	<b>38.89%</b>	<b>16.67%</b>	<b>89.77%</b>	<b>33.33%</b>	<b>100.00%</b>	<b>100.00%</b>



### Centum Scorers in Economics

Sl.NO.	Name of the Student	Subject	Class	Year
1	GAVISIDDANA GOWDA	ECO VI	VI Sem	2011 - 12
2	KAVYASHREE B K	ECO VI	VI Sem	2011 - 12
3	SHWETHA N	ECO VI	VI Sem	2011 - 12
4	SUROJ B	ECO VI	V Sem	2012 - 13
5	UMASHANKAR	ECO VI	V Sem	2012 - 13

### 35. SWOC analysis of the departmental and Future plans.

#### Strengths

- Efficient, dedicated and quality faculty.
- Sound academic work environment.
- Regular assessment of students through unit tests, seminars, presentation, assignments etc.
- Maximum focus on academic, co-curricular activities
- Consistent good results in university examinations and many students have secured cent percent marks in university level.
- Good collection of books in Library.

### Weaknesses

- Inability of staff in using ICT.
- Less student strength.

### Opportunities

- To make the subject more attractive and interesting by adopting modern teaching aids.
- Motivating students to take up competitive exams.

### Challenges

- To motivate students to prepare themselves adequately for higher studies
- To make the subject more attractive by introducing new add-on courses so the students can opt for it and enjoy learning.

### Future plan

- Organizing seminars / workshop /special lectures.
- Adopting modern pedagogic tools in teaching methods.
- Introducing journals related to the subject in the library.
- Steps to learn computer basics and use of ICT by the dept. faculty.
- To inculcate the spirit of research among students using available infrastructural amenities in the institutions

\*\*\*\*\*